

# PEARL HARBOR

## Pearl Harbor

TORA TORA TORA!!!!

Over 80 years ago, the surprise attack on Pearl Harbor permanently changed the course of history. The absolute chaos which ensued is reflected in this slot as you take to the skies and bomb, slice, and kamikaze your way to ultimate victory in this adrenaline rush of a cluster game.

Wreaking havoc is the only way. There's NO holding back.

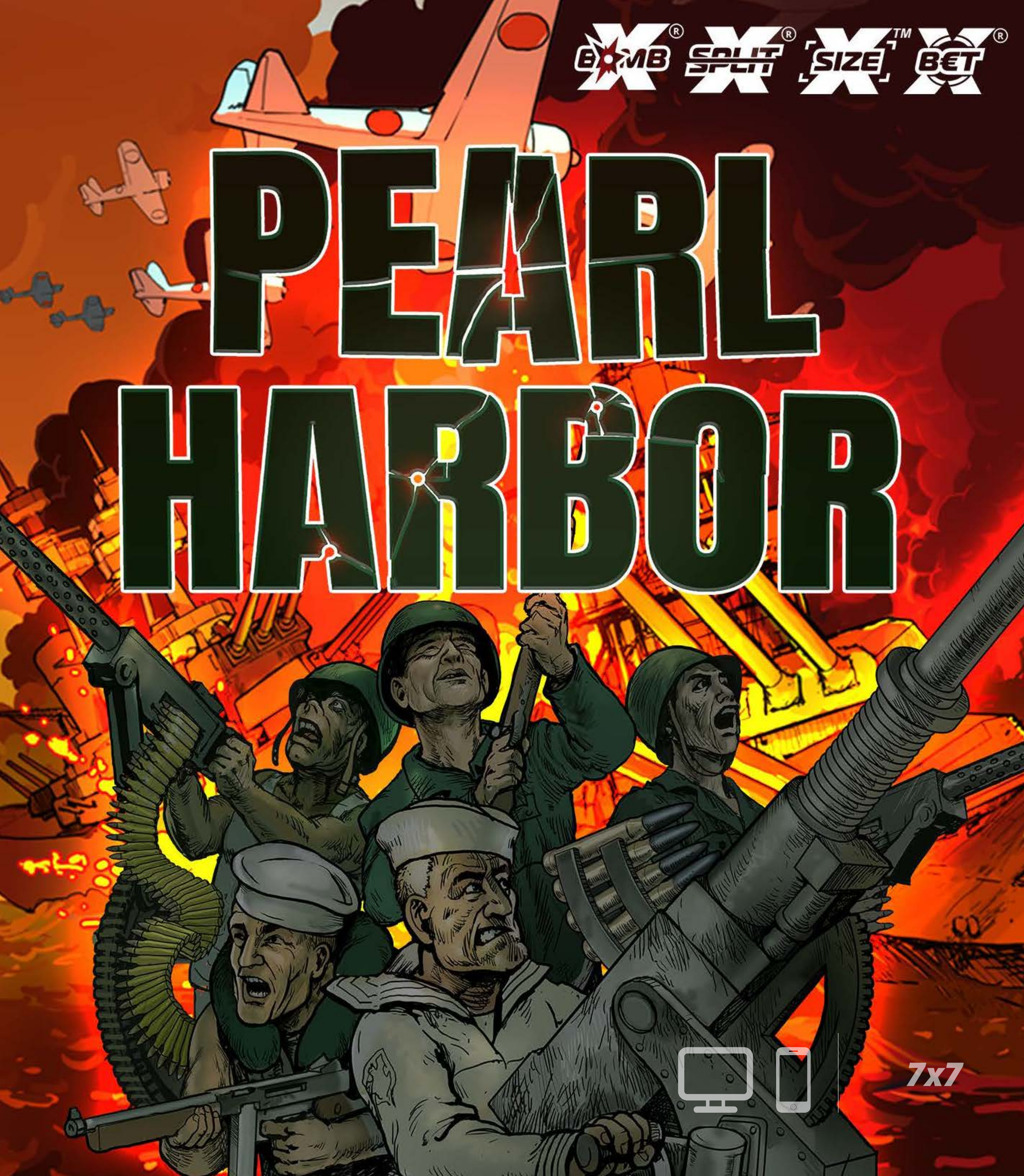
### HIGHLIGHTS & FEATURES

- xSplit®
- xBet®: Banzai!
- xBomb® Wild Multiplier
- Target
- xSize™ Dynamic Cluster Grid
- Dogfight
- TORA! TORA! TORA!
- Mission Accomplished!

### KEY INFORMATION

RTP Options	96.06% , 94.10% (DX1), 92.01% (DX2)
RTP Main Game	65.64%
RTP Bonus (Dogfight)	27.54%
RTP Bonus (Tora! Tora! Tora!)	2.9%
Volatility	Extreme (10)
Hit Frequency	19.41%
Max Payout	41,127x times the base bet (1 in 200M spins with the 96.06% RTP Option)
Free Spins	1 in 229 spins
Win 100x Bet	1 in 1,210 spins
Min Bet / Max Bet / Max Bet with xBet®	€£\$ 0.20 / €£\$ 100.00 / €£\$ 200.00
Features	10 (Scatter, Colossal Symbol, xSplit®, xBet® Banzai, xBomb® Multiplier, Target, Dogfight, Tora! Tora! Tora!, Mission Accomplished!, Nolimit Bonus - Feature Buy Functionality*)
Reels x Rows	7x7 Grid Cluster Area
GameID	PearlHarbor / PearlHarborDX1 / PearlHarborDX2

\*The Nolimit Bonus feature may however be removed in some regulated markets.





## FEATURES IN THE GAME



### CLUSTER PAYOUT REEL AREA ( FEATURING xSIZE™)

The game area is a dynamic xSize 7x7 area where the central 3x3 area is initially active and the rest are blocked.

Cluster wins are achieved with five or more matching symbols that are adjacent horizontally and/or vertically inside the active area.

After a winning Cluster, symbols in the winning Cluster will be destroyed allowing new ones to drop in.

Multipliers on symbols in winning Clusters are always summed up together with possible round multiplier from previous xBombs before they are multiplied to the Cluster size payout value.

With xSize™, the following features will expand the active area;

- xBomb® explosions
- Targets
- Colossal symbols

## FEATURES IN THE GAME



### SCATTERS

In the main game, the Scatter symbol can land on any reel but only counts if it is in the active reel area.

If a Scatter symbol gets split and a bonus mode is triggered, the multiplier value of the Scatter symbols will become an ( X ) Multiplier in the first bonus multiplier addition.

Scatter symbols can only land 1 per reel.



### xBET® BANZAI!

At a cost of an extra +50% on the base bet, the player is guaranteed one Scatter symbol in the middle of the active area, increasing the chances of entering Dog Fight bonus by over 3 times.

At a cost of an extra +100% on the base bet, the player is guaranteed two Scatter symbols landing on the initial drop. This increases the chances of entering Tora! Tora! Tora! Bonus by over 10 times.

The payout for each symbol is not affected, meaning all winnings are based on the base bet value.



## FEATURES IN THE GAME



### xBOMB® WILD MULTIPLIER

xBomb® Wild blows away a maximum of 10 symbols surrounding it in the active area. xBombs will only blow up inside the active area.

If an xBomb® is adjacent to the active areas border, it will move the active area by 1 reel or row. If the xBomb® is in the corner of the active area, it will expand the active area 1 reel and 1 row.

If the xBomb® gets split, it will get a x2 multiplier for the next avalanche with +1 or the ( X ) multiplier amount it has been split into.

Exploding xBombs will increase the win multiplier for the next avalanche with +1 or the ( X ) multiplier amount it has been split into. All

xBombs will explode before the next avalanche.

Scatters and transformed Wilds that are not part of a win Cluster will not be blown away.



### TARGET

Target Symbols can land anywhere on the reels.

When a Target symbol lands, the active reel area will expand to make the Target symbol be part of the rectangle active reel area.

When a Target symbol has landed and becomes part of the active reel area it transforms into a Wild symbol.

## FEATURES IN THE GAME



### xSPLIT®

xSplit symbol comes in the shape of a samurai sword and splits all symbols in the direction of the swords handle.

xSplit symbols have initially either one or two swords that can point both horizontally and vertically, but only one direction per sword.

Split symbols only activate when inside the active reel area and once the avalanche has stopped.

If an xSplit gets split by another xSplit symbol, it will get an additional sword pointing in a new direction. If an xSplit symbol already has 4 swords, a new split will add a x2 multiplier.

If an xSplit symbol has a multiplier when activate all symbols it splits get the xSplit's multiplier or multiplies its current multiplier with the xSplit's multiplier.

Scatter symbols, target symbols and xBombs get a x2 multiplier when hit by an xSplit.

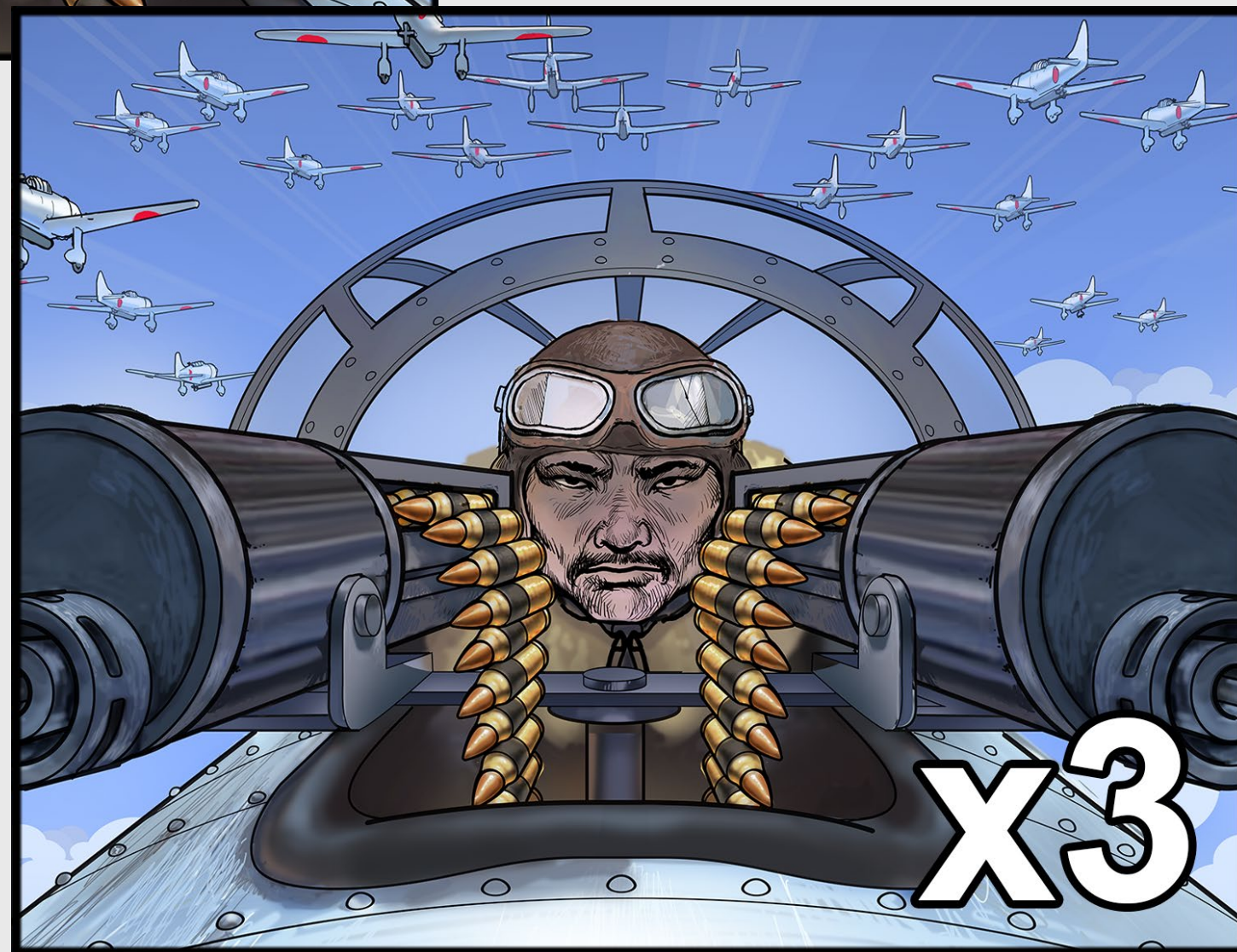
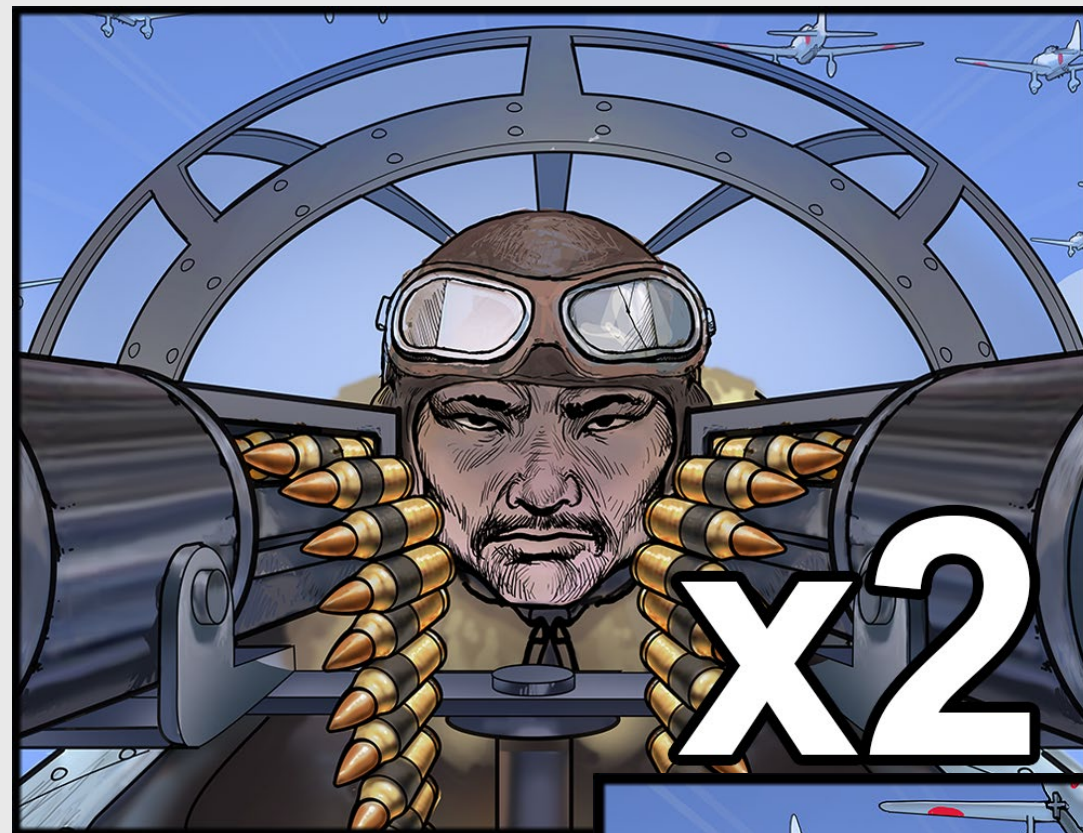
Consecutive xSplits on multiplier symbols double the multiplier value.

After the splitting, the xSplit symbol becomes a Wild symbol.

The Wild symbol gets a multiplier depending on how many swords it has and possible multiplier will multiply the sword multiplier value.



## FEATURES IN THE GAME



### COLOSSAL SYMBOL

When a Colossal symbol drops in, the active reel area will expand its rectangular area so that the Colossal symbol becomes a part of the active reel area.

Colossal symbols come in the size of 2x2 and 3x3 and can have a multiplier of x2 or x3 and is initially counted as 1 symbol in a possible Cluster.

If a 3x3 symbol is split, it first splits into 3 symbols either vertically or horizontally depending on where the split comes from.

Second xSplit will split the Colossal symbol in the other direction to a 3x3 symbol regardless of xSplit direction.

Third xSplit will split all 9 symbols in half to a total of 18 symbols.

Fourth xSplit will either give x2 multipliers to each symbol from the initial Colossal symbol or multiply each individual multiplier by 2.

For 2x2 Colossal symbols, the same principals are applied.



## FEATURES IN THE GAME



### BONUS MODE: DOGFIGHT

3 Scatter symbols trigger the Dogfight Feature. Dogfight feature starts with 3 spins and plays inside of a fighter plane cockpit with an instrument panel of 18 dials.

The instrument dials all start spinning and can either land an ( X ) multiplier , ( + ) multiplier or nothing. Any multiplier that lands will reset the spin count to 3.

When multipliers land they are active until they have added their values to the round multiplier.

All active ( + ) multipliers are first summed up then they multiply all ( X ) multipliers before they add that amount to the round multiplier. The active ( X ) multipliers remain active until a ( + ) multiplier lands.

If a bonus round ends with active ( X ) multipliers they turn into ( + ) multipliers and sum up their value and adds that to the round multiplier and ends the bonus round.

#### DOGFIGHT ATTACK

- Fill up a column of dials.
- A Dogfight attack is initiated.
- All multipliers in the column become active.
- If the enemy plane is hit, the active multipliers are summed up in the same way as a normal bonus spin.
- If there are only ( X ) multipliers in the column, they are multiplied together from top to bottom, and finally by 1 to get the sum to be added to the round multiplier.
- If the enemy plane is missed, nothing is added and the next spin is initiated.
- If the spin initiating the Dogfight only had ( X ) multipliers, those ( X ) multipliers remain active for the next spin.
- Multiple Dogfights are done in sequence from left to right.

#### KAMIKAZE ATTACK

- If all 18 instrument dials have been filled, a Kamikaze Attack will launch after Dogfights are done.
- A multiplier wheel with 10 possible multipliers, including misses, will spin as the aircraft approaches a target ship.
- If the ship gets hit, the multiplier from the wheel will multiply with the total round multiplier from the bonus round.

## FEATURES IN THE GAME



### BONUS MODE: TORA! TORA! TORA!

4 Scatter symbols trigger the Tora! TORA! TORA! Feature. The feature starts with 3 spins and plays inside of a fighter plane cockpit with an instrument panel of 18 different dials.

Gameplay and features from Dogfight are the same, but with the additions of Midway Pop and Bomb Drop.

#### MIDWAY POP

- Midway Pop is activated when a Multiplier lands on a dial in the mid row.
- The amount value pops up to the top row in the current column.
- If no value exists there from before, it will randomly get a ( + ) multiplier or an ( X ) multiplier independently of mid row multiplier type.
- If a value already exists on the top row, the mid row amount is added to the existing value and multiplier type remains.

#### BOMB DROP

- Bomb Drop is activated when a full row of instrument dials is filled.
- A bomb hatch opens up, a ship gets locked in, and a bomb is dropped.
- If the ship gets hit, all ( + ) multipliers of that row get added together and is multiplied with all the ( X ) multipliers of that row.
- If the ship is missed, nothing is added and the next spin is initiated.
- If the spin initiating the Bomb Drop only had ( X ) Multipliers, those ( X ) Multipliers remain active.
- Multiple Bomb drops are done in sequence from top to bottom. Possible Dogfights are done before Bomb Drops initiate.



## FEATURES IN THE GAME



### MISSION ACCOMPLISHED!

The max payout of the game is 41,127 times the base bet.

When the total win exceeds this amount, the game round will end and 41,127 times the base bet is awarded.



## FEATURES IN THE GAME



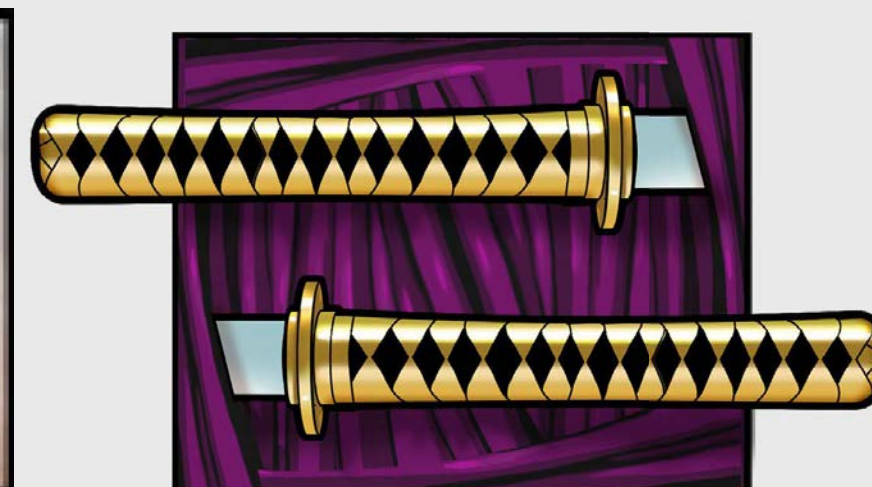
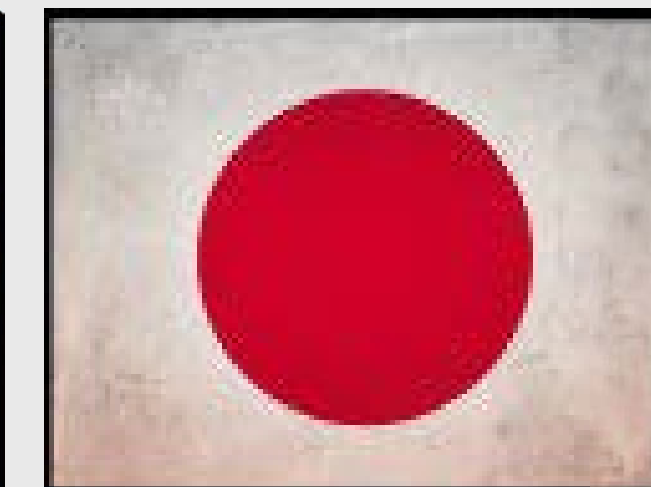
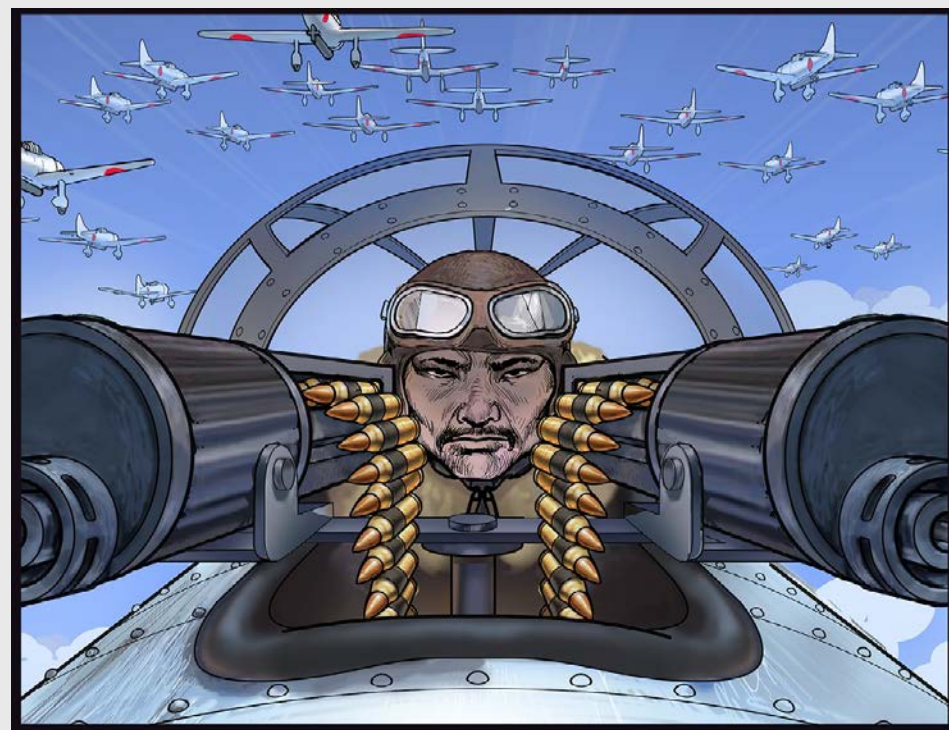
### NOLIMIT BONUS - FEATURE BUY FUNCTIONALITY

Buy your way straight into one of the different bonus features, ranging from 60-712 times the base bet.  
The Nolimit Bonus feature may however be removed in some regulated markets.





## SYMBOLS





# PAYTABLE AND WIN WAYS

### CLUSTER PAYOUT

**WIN**

3X3    4X4    5X5    6X6    7X7

**NO WIN**

3X3    4X4    5X5    6X6    7X7

Symbol	40+	38-39	34-37	30-33	25-29	22-24	19-21	17-18	15-16	13-14	11-12	10	9	8	7	6	5
天	75	60	50	40	30	22.50	17.50	12.50	8.50	5.00	3.50	2.50	1.50	1.00	0.75	0.60	0.40
北	60	50	40	30	22.50	17.50	12.50	8.50	5.00	3.50	2.75	2.25	1.50	0.75	0.65	0.50	0.30
貝	50	40	30	22.50	17.50	12.50	10	7.50	5.00	4.00	2.25	2.00	0.90	0.75	0.50	0.40	0.25
才	40	30	25	20	15	10	7.50	5.00	3.75	2.50	2.00	1.40	0.75	0.50	0.40	0.30	0.20
田	30	25	20	15	10	7.50	5.00	3.75	2.75	2.00	1.50	0.95	0.65	0.45	0.35	0.25	0.15

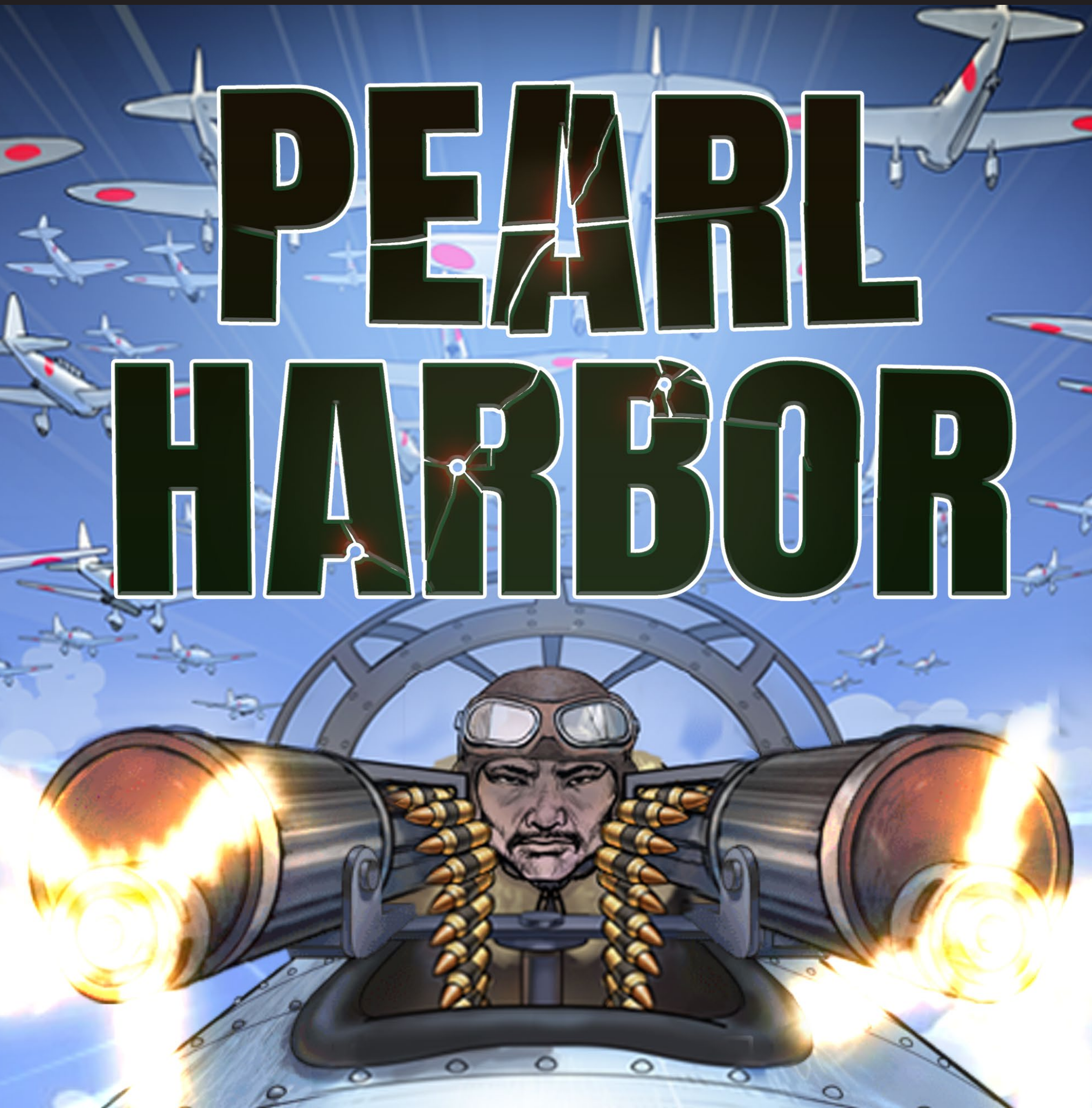
Symbol	40+	38-39	34-37	30-33	25-29	22-24	19-21	17-18	15-16	13-14	11-12	10	9	8	7	6	5
Red Sun	625	500	375	275	180	90	75	60	50	40	25	12.50	5.00	3.50	2.10	1.50	1.00
Captain	375	275	180	90	75	62.50	50	37.50	25	17.50	12.50	6.25	3.00	2.00	1.25	0.90	0.70
Pilot	275	180	90	75	60	50	40	30	20	15	7.50	5.00	2.75	1.75	1.10	0.85	0.65
Old Man	180	90	75	60	50	37.50	25	20	15	10	5.00	3.00	2.50	1.50	0.95	0.75	0.50

Winnings are calculated by multiplying the symbols Cluster size payout value with all active multipliers added together.

Clusters are defined as adjacent symbols horizontally and vertically touching sides with each other.



## GAME PHRASES



### How to describe Pearl Harbor:

- The chaos of the surprise attack on Pearl Harbor is reflected in this slot as you fly, bomb, slice, and kamikaze your way to ultimate victory in the adrenaline rush of a cluster game.
- Sometimes, wreaking havoc is the only way.
- Nolimit City's second Cluster game, Pearl Harbor, features their brand new xMechanic, xSize™ - Expanding win possibilities and reaching new horizons.
- Pearl Harbor goes all out in the ruthless world of WW2. TORA TORA TORA!
- Take to the skies in Pearl Harbor and get straight into battle. Dogfights, bomb drops and Kamikazes await in the slot's unique bonus modes.
- TORA TORA TORA! In desperate times, wreaking havoc is the only way. Buckle up for Nolimit's bombastic cluster game, Pearl Harbor.

SUMMARY

FEATURES

SYMBOLS

BET LINES

GAME PHRASES

GAME IDs

PROMO PACK

**nolimit**  
CITY



## GAME IDs & RTPs

DESKTOP + MOBILE		
Game ID	Comment	RTP
PearlHarbor	Standard Version	96.06%
PearlHarborDX1	DX1 Version	94.10%
PearlHarborDX2	DX2 Version	92.01%
PearlHarborDX4*	DX4 Version - * for use in DE markets only	87.20%





GET THE FULL PROMO PACK

The banner features a dramatic, fiery illustration of the Pearl Harbor attack. At the top left, four 'X' logos are displayed with the words 'BOMB', 'SPLIT SPLIT', 'SIZE', and 'BET' integrated into them. The title 'PEARL HARBOR' is written in large, bold, green letters with a white outline, set against a background of orange and red flames. In the center, a large battleship is being targeted by several B-29 bombers. To the right, a smartphone displays the game's interface, showing a 5x3 grid of symbols including Japanese characters and portraits of military figures. The phone's bottom dock contains icons for a star, a refresh button, a play button, a lightning bolt, and a volume icon.

To download the promo pack, please visit the Operator section on our website

<https://www.nolimitcity.com/operator/>

**nolimit** CITY **18+** **mga** MALTA GAMING AUTHORITY [www.nolimitcity.com](http://www.nolimitcity.com) MGA/B2N MGA/ B2B/109/2004 **BeGambleAware.org** PLEASE GAMBLE RESPONSIBLY.

- SUMMARY
- FEATURES
- SYMBOLS
- BET LINES
- GAME PHRASES
- GAME IDs
- PROMO PACK