

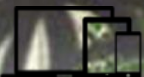
GRAND JUNCTION



Enchanted Inca™

January 2022

Available on



The information presented in this document is privileged and confidential information of Playtech Group and is also protected subject matter of copyrights owned by Playtech Group and of agreements between Playtech Group and its licensees and other parties. Copying, transmission and disclosure of such information can only be done within the strict scope of a governing Playtech Group agreement. While all efforts have been made to ensure that the content of this document is accurate at the time of publication, the data upon which this document is based is subject to future change. The information contained in this document is exclusively intended for the individual or entity to which it is deliver. If you are not the intended recipient of this document, you are hereby notified that any review, disclosure, dissemination, distribution, or reproduction of this document in any way or act is prohibited. Updated versions of this document will be released, when necessary, resources permitting.



Table of Contents

Business Summary	3
Business Case	3
Game Details	4
Base Cost	4
Symbol Details	6
Game Features	7
Screenshots	9

Business Summary

Journey through the jungle and discover the mystic and wealth of the INCA. Free Games as well as collecting coins offer rewards and riches. Special watermarked symbols add to the intrigue and wonder of this magical land.

Scattered magic mask triggers Free Games where the staff of the Incan chief emits fireballs that transform the royal symbols into paying combinations.

The unique Grand Junction feature give the opportunity to win all or part of the BONUS prizes

Various symbols on the reels have a watermark behind them. Land 5 scattered watermarked symbols and the Grand Junction feature is triggered. In the Grand Junction players collect coins and trains. The more coin collected the higher the prize. Collect 3 or more trains and it is off to the Grand Junction bonus game where players compete for all or part of a bonus prize. The more train collect the higher the prize.

This game can be played on the following devices and orientations:

- Desktop
- Tablet in both landscape and portrait modes
- Mobile in both landscape and portrait modes



For information on supported mobile devices and information on how to configure game limits to control house exposure, see the [GPAS Integration Options](#) document.



This game supports Free Spins Bonus (FSB).

Business Case

- The Grand Junction Feature is triggered by landing 5 scattered watermarked symbols.
- Grand Junction feature awards 9 free games. Any COIN or TRAIN symbols are held.
- CONDUCTOR symbol awards an additional 3 free games
- COIN symbols are credit prizes x total bet
- Collect 3 or more TRAIN symbols in the Grand Junction Feature to progress to the BONUS Game.
- The Bonus Game awards one spin of a special reel set that contains numbers. The higher the sum of the numbers, the higher the prize.
- 3 or more GOLDEN MASKS scattered anywhere on the reels, awards 9 Free Games.
- Grand Junction Feature can be triggered during Free Games.
- During Free Games royal symbols on reels 2,3 and 4 may convert to WILD symbols.

Game Details

Game Code	gpas_eninca_pop		
Casino Launcher / IMS Game Code	gpas_enica_pop		
Base Cost	5		
Grid Size / Nº of Lines	3x5 /25 Lines		
Combined Feature Frequency	1 in 78		
Player Volatility	4/5		
RTP	96.45%		
Hit Frequency per Max Lines	2.72		
Maximum Paytable Prize	2000 x bet		
Win Distribution	Low	Medium	High
Maximum Win (x Total Bet) from 1 Billion Simulations	2195.4 x Total Bet		
Maximum Win Probability(1 in X games)	1 in 2,6245,432		
Maximum Win Description	Grand Bonus prize from Grand Junction feature		

Base Cost

When configuring a game, you can set a **Base Cost Multiplier**, which multiplies the Base Cost (minimum size bet) set by Playtech. This means that while the number of lines in this game is 25 lines, the Base Cost to play is set to 5 by Playtech - you can then set a Base Cost Multiplier to set the stake levels for the game.

This is an innovative feature that allows Playtech to offer games that are more amenable to cheap Free Spins Bonus promotions, while still allowing Playtech games to deliver the full range of features and winlines.

For example, on this game the Free Spins Bonus can be promoted at a cost of 5p (Base Cost Multiplier 1), while still being able have the game available at a default cost of 10p (Base Cost multiplier 2) or even 20p (Base Cost multiplier 4).

There are no fractional betting and rounding concerns.

Examples are in the table below:

Base Cost Multiplier	Stake (GBP Example)
1	5p
2	10p
3	15p
4	20p
5	25p

Symbol Details



WATERMARK

Watermarked symbols appear on all reels

A, Q, Q, J, 10, 9, Idol and Vase can have a watermark behind the symbol.

Any 5 symbols with a watermark scattered on the reels will trigger the Grand Junction Feature



TEMPLE

Substitutes for all symbols except WATERMARK



GOLDEN MASK

3 or more scattered GOLDEN MASK triggers 8 Free GAMES

A, K, Q J symbols on reel 2,3 and 4 may transform into WILD symbols in free game

Free Games can be retriggered

Game Features

Game Feature 1

Grand Junction Feature:

- When 5 **Watermark** symbols land simultaneously anywhere on the reels, the Grand Junction Feature is triggered.
- There are two stages to Grand Junction Feature; stage 1 *Hold and Spin Bonus* and stage 2 *Bonus Game*.

Hold and Spin Bonus

- 9 free spins are awarded.
- Each **Coin** symbol that lands during a free spin is held for the remaining free spins.
- Each **Train** symbol that lands during a free spin is held for the remaining free spins.
- Each Conductor symbol that lands during a free spin awards an additional 3 spins. Conductor symbols are not held.
- At the end of the free spins, all Coin prizes are added to the total win and if 3 or more Train symbols are collected, play advances to the Bonus Game.

Bonus Game

- 3,4,5 or 6 Train symbols collected during Hold and Spin Bonus awards the Mini, Minor, Major or Grand Bonus game respectively.
- 1 free spin is awarded.
- Each reel will reveal a number of either 3,4,5,6,7 or a Train symbol.
- At the end of the free spin, each Train symbol will animate to reveal either 8, 9 or 10.
- The numbers added together across all five reels determines the SCORE and the resulting prize

SCORE	0-36	37-39	40- 43	44-50
GRAND GAME (x total bet)	130x	300x	600x	2000x

SCORE	0-32	33-40	41-45	46-50
MAJOR GAME (x total bet)	50x	75x	125x	500x

SCORE	0-32	33-41	42-50
MINOR GAME (x total bet)	25x	45x	100x

SCORE	0-30	31-50
MINI GAME (x total bet)	10x	20x

Game Feature 2

Free Games Feature:

When 3 or more **GOLDEN MASK** symbols land simultaneously anywhere on the reels, the Free Games Feature is triggered.

8 free games are awarded.

During free games the reels spin automatically.

The free games are played with the same bet that was placed on the spin that triggered them.

During the free games A, K, Q and J on reels 2, 3 and 4, may transform into Wild symbol.

During the free games, any 3 or more **GOLDEN MASK** symbols will award an additional 8 free games.

During the free games, the Grand Junction Bonus Feature can be triggered.

Screenshots

Devices



1. Desktop

Main game reels in the desktop user interface



2. Mobile

Main game reels in the mobile user interface

Gameplay



1. Splash screen

Splash screen displaying game symbols and theme

PAYTABLE

<table border="1"> <tr><td>5</td><td>100</td></tr> <tr><td>4</td><td>20</td></tr> <tr><td>3</td><td>4</td></tr> </table>	5	100	4	20	3	4	<table border="1"> <tr><td>5</td><td>80</td></tr> <tr><td>4</td><td>15</td></tr> <tr><td>3</td><td>3</td></tr> </table>	5	80	4	15	3	3							
5	100																			
4	20																			
3	4																			
5	80																			
4	15																			
3	3																			
<table border="1"> <tr><td>5</td><td>60</td></tr> <tr><td>4</td><td>10</td></tr> <tr><td>3</td><td>2</td></tr> </table>	5	60	4	10	3	2	<table border="1"> <tr><td>5</td><td>10</td></tr> <tr><td>4</td><td>2</td></tr> <tr><td>3</td><td>1</td></tr> </table>	5	10	4	2	3	1							
5	60																			
4	10																			
3	2																			
5	10																			
4	2																			
3	1																			
<p>WILD SUBSTITUTES FOR ALL OTHER SYMBOLS EXCEPT GOLDEN MASK AND GRAND JUNCTION.</p> <table border="1"> <tr><td>5</td><td>200</td></tr> <tr><td>4</td><td>100</td></tr> <tr><td>3</td><td>20</td></tr> </table>	5	200	4	100	3	20	<p>SCATTER</p> <table border="1"> <tr><td>5</td><td>100</td></tr> <tr><td>4</td><td>15</td></tr> <tr><td>3</td><td>1</td></tr> </table>	5	100	4	15	3	1	<p>SCATTER</p> <table border="1"> <tr><td>5</td><td>10</td></tr> <tr><td>4</td><td>2</td></tr> <tr><td>3</td><td>1</td></tr> </table>	5	10	4	2	3	1
5	200																			
4	100																			
3	20																			
5	100																			
4	15																			
3	1																			
5	10																			
4	2																			
3	1																			

2. Paytable – Payouts

Paytable page listing the symbol combination payouts

FREE GAMES FEATURE

- WHEN 3 OR MORE GOLDEN MASK SYMBOLS LAND SIMULTANEOUSLY ANYWHERE ON THE REELS, THE FREE GAMES FEATURE IS TRIGGERED.
- 8 FREE GAMES ARE AWARDED.
- DURING THE FREE GAMES A, K, Q AND J ON REELS 2, 3 AND 4, MAY TRANSFORM INTO WILD SYMBOL.
- DURING THE FREE GAMES, ANY 3 OR MORE GOLDEN MASK SYMBOLS WILL AWARD AN ADDITIONAL 8 FREE GAMES.
- DURING THE FREE GAMES, THE GRAND JUNCTION™ BONUS FEATURE CAN BE TRIGGERED.

3. Paytable – Free Games

Paytable page listing the Free GAMES feature trigger conditions and rules

GRAND JUNCTION™ FEATURE

- WHEN ANY 5 SYMBOLS WITH GRAND JUNCTION LOGO BACKGROUND LAND SIMULTANEOUSLY ANYWHERE ON THE REELS, THE GRAND JUNCTION™ FEATURE IS TRIGGERED.
- THERE ARE TWO STAGES TO GRAND JUNCTION™ FEATURE; STAGE 1 HOLD AND SPIN BONUS AND STAGE 2 BONUS GAME.
- 3 OR MORE TRAIN SYMBOLS COLLECTED DURING THE HOLD AND SPIN BONUS ADVANCES PLAY TO THE BONUS GAME.

HOLD AND SPIN BONUS

- 9 FREE SPINS ARE AWARDED.
- EACH COIN SYMBOL THAT LANDS DURING A FREE SPIN IS HELD FOR THE REMAINING FREE SPINS.
- EACH TRAIN SYMBOL THAT LANDS DURING A FREE SPIN IS HELD FOR THE REMAINING FREE SPINS.
- EACH CONDUCTOR SYMBOL THAT LANDS DURING A FREE SPIN AWARDS AN ADDITIONAL 3 SPINS.
- CONDUCTOR SYMBOLS ARE NOT HELD.
- AT THE END OF THE FREE SPINS, ALL COIN PRIZES ARE ADDED TO THE TOTAL WIN AND IF 3 OR MORE TRAIN SYMBOLS ARE COLLECTED, PLAY ADVANCES TO THE BONUS GAME.
- COIN PRIZES ARE 1X, 2X, 3X OR 5X TOTAL BET.

4. Paytable – Grand Junction Feature

Paytable page listing the Grand Junction trigger conditions and Rules as well as Hold and Spin Bonus rules

BONUS GAME

- 3, 4, 5 OR 6 TRAIN SYMBOLS COLLECTED DURING HOLD AND SPIN BONUS AWARDS THE MINI, MINOR, MAJOR OR GRAND BONUS GAME RESPECTIVELY.
- 1 FREE SPIN IS AWARDED.
- EACH REEL WILL REVEAL A NUMBER OF 3, 4, 5, 6, 7 OR A TRAIN SYMBOL.
- AT THE END OF THE FREE SPIN, EACH TRAIN SYMBOL WILL ANIMATE TO REVEAL EITHER 8, 9 OR 10.
- THE NUMBERS ADDED TOGETHER ACROSS ALL FIVE REELS DETERMINES THE SCORE AND THE RESULTING PRIZE AMOUNT ACCORDING TO THE METER ABOVE THE REELS.

GRAND

0 → 25 37 → 39 40 → 43 41 → 50

150X 300X 600X 300X

MAXIMUM GRAND PRIZE VALUE = 2000 X TOTAL BET

GRAND GAME PRIZES CAN BE 130X, 300X, 600X OR 2000X TOTAL BET.

MAJOR

0 → 20 33 → 40 41 → 45 46 → 50

50X 75X 125X 50X

MAXIMUM MAJOR PRIZE VALUE = 900 X TOTAL BET

MAJOR GAME PRIZES CAN BE 50X, 75X, 125X OR 500X TOTAL BET.

MINOR

0 → 31 32 → 41 42 → 50

25X 45X 100X

MAXIMUM MINOR PRIZE VALUE = 100 X TOTAL BET

MINOR GAME PRIZES 25X, 45X OR 100X TOTAL BET.

MINI

0 → 20 31 → 50

10X 20X

MAXIMUM MINI PRIZE VALUE = 20 X TOTAL BET

MINI GAME PRIZES CAN BE 10X OR 20X TOTAL BET.

5. Paytable – Grand Junction Feature

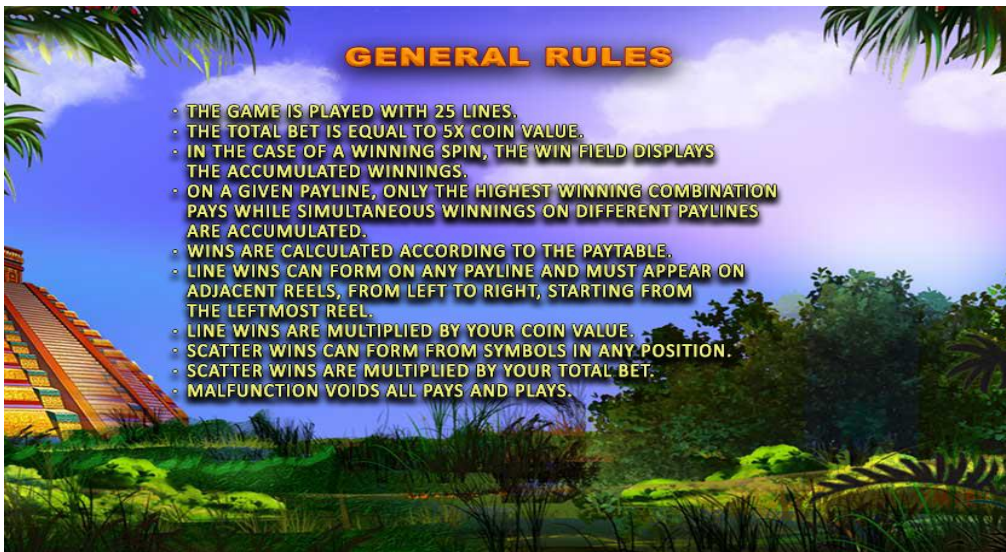
Paytable page listing the Grand Junction trigger conditions and rules of the bonus game

PAYLINES

6. Paytable- Lines

Proprietary and Confidential

7. Paytable- General Rules



Reels in the main game



9. Free Games Trigger

3 scattered Golden Mask Symbols



Proprietary and Confidential



10. Free Games

Royal Symbols turning WILD.



11. Total Win Display

At the end of Free Games



12. Grand Junction Feature Trigger

5 Scattered watermarked symbols



13. Hold and Spin

9 Free Games awarded where the object is to collect both COINS and TRAIN symbols



14. Hold and Spin

End on Hold and Spin with 8 Coins and 4 Trains collected



15. Hold and Spin

4 TRAINS collected and MINOR bonus game awarded



16. Intro into Bonus game explaining the details



17. Bonus game Result

All numbers are added up to determine amount won from Minor Bonus amount. TRAIN symbol will animate to reveal a "high" number



18. Final Result

Final result is added and displayed in the gauge. The highlighted section gauge also shows the visual result