

# Enchanted Manor<sup>®</sup>

---

Enchanted Manor™ is a 4x5 40 line slot game with a 40 credit entry bet. Take a step inside this Spook-tacular Manor of Replicating Reels and Enchanted Free Games. Players can trigger the Replicating Reels Feature by landing a (TR) on reels 1 and 5 or randomly after any base game spin. During the feature, 2,3,4 or 5 reels will transform into a full stacks of the same symbol (any symbol except (TR)), and can even trigger the Free Games! Players can also trigger the Free Games by landing at least 2 full stacks of (SC) in the Base Game, where the Replicating Reels Feature will occur on every spin. So come visit our Fang-tastic Enchanted Manor if you dare!



# Enchanted Manor<sup>®</sup>

## General information

Game type	<b>Video slot</b>
Layout	<b>5x4</b>
Lines	<b>40</b>
Min bet (EUR)	<b>0.40</b>
Max bet (EUR)	<b>120.00</b>

## Technical information

Game codes	<b>ASL_ENM_EU</b>
<i>Note: Only base game codes are needed to run the game on desktop and mobile.</i>	<b>ASL_ENM_EU_88</b>
	<b>ASL_ENM_EU_90</b>
	<b>ASL_ENM_EU_92</b>
	<b>ASL_ENM_EU_94</b>

# Enchanted Manor<sup>®</sup>

## Detailed information

*Available for certain states only	ASL_ENM_EU	ASL_ENM_EU_88*	ASL_ENM_EU_90*	ASL_ENM_EU_92*	ASL_ENM_EU_94*
Hit frequency	<b>26.94%</b>	<b>26.94%</b>	<b>26.94%</b>	<b>26.94%</b>	<b>26.94%</b>
RTP (Return to player)	<b>95.52%</b>	<b>88.13%</b>	<b>90.05%</b>	<b>92.51%</b>	<b>94.07%</b>
Max Payout (X total bet)	<b>6255x</b>	<b>6255x</b>	<b>6255x</b>	<b>6255x</b>	<b>6255x</b>
Volatility	<b>Medium</b>	<b>Medium</b>	<b>Medium</b>	<b>Medium</b>	<b>Medium</b>

# Enchanted Manor<sup>®</sup>

---

## Game Features

### REPLICATING REELS

The Replicating Reels Feature can be triggered 1 of 2 ways. If an (TR) symbol lands on reels 1 and 5 or randomly after any base game spin. Once triggered the player is awarded with 1 Replicating Reels spin where 2,3,4 or 5 reels will land 4 high of any symbol not including the (TR).

### FREE GAMES

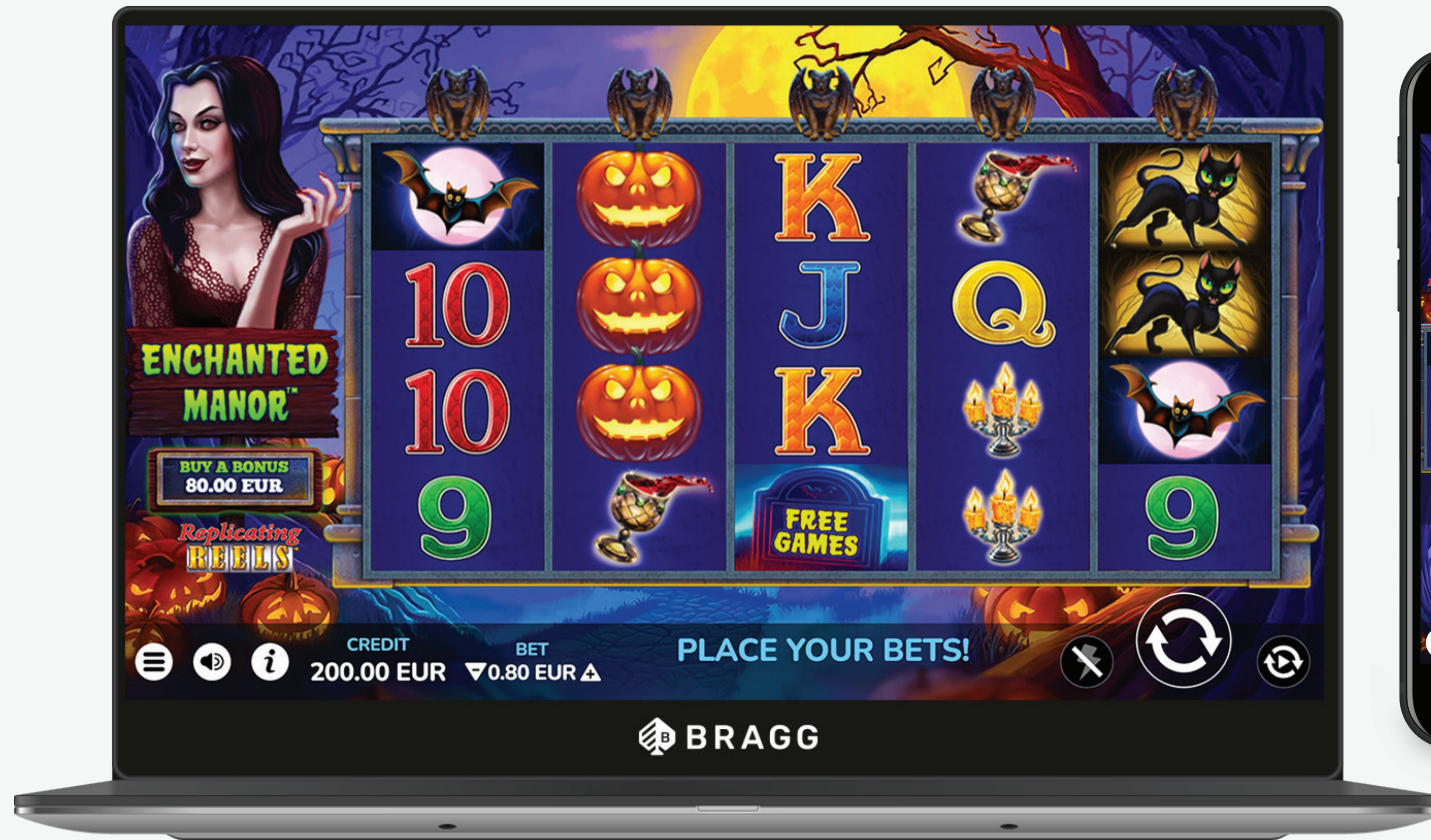
On any Base Game spin, if a player lands a fully stacked (SC) 4 high on 2,3, 4 or 5 reels, the player is then awarded 7 Free Games. Every position that triggered the free games will become Replicating Reels where every position will transform into a stack of symbols not including the (TR).

In the Free Games the player has the possibility to trigger Tombstone Frenzy mode where additional (SC) symbols will be added to the reels which will increase the chance to retrigger more spins.

At the end of the Free Games the player has a random chance to be awarded 5 additional free games.

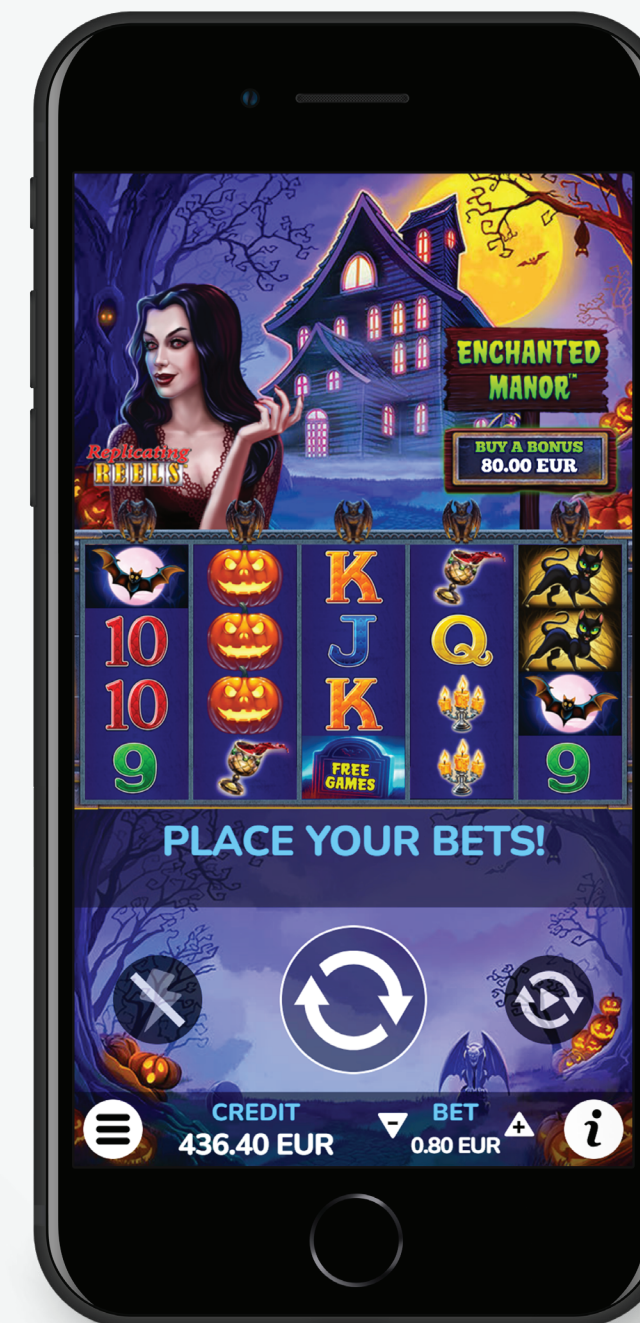
# Enchanted Manor®

## Game Design



Desktop

Portrait






Landscape



# Enchanted Manor<sup>®</sup>

## Symbols

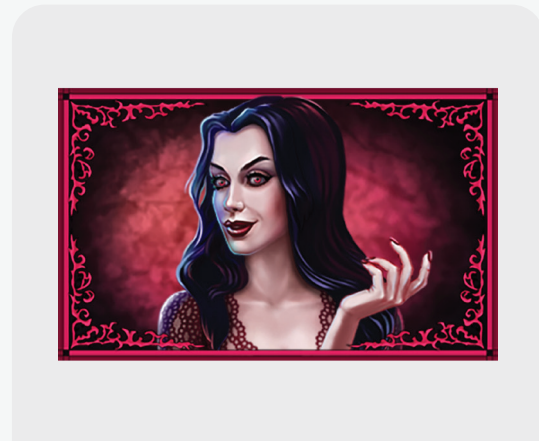
**SPECIAL SYMBOLS**

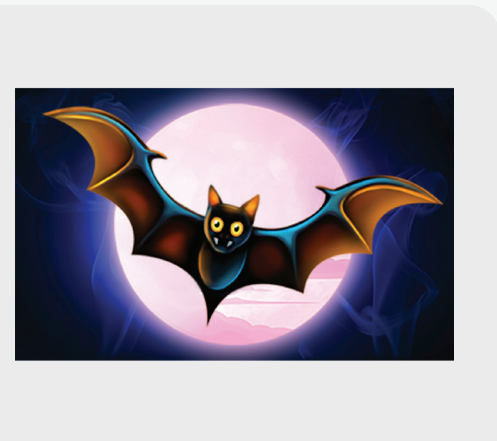
**SCATTER GRAVE**

**WILD PUMPKIN**

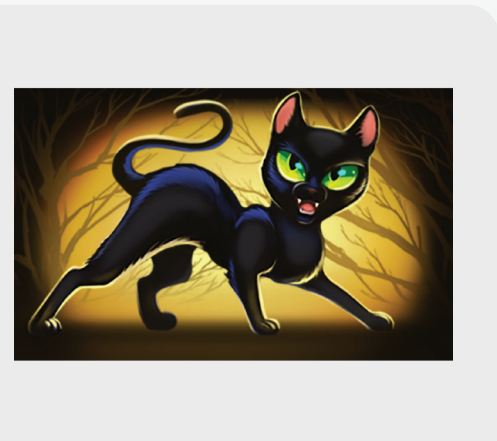
**BN HOUSE**



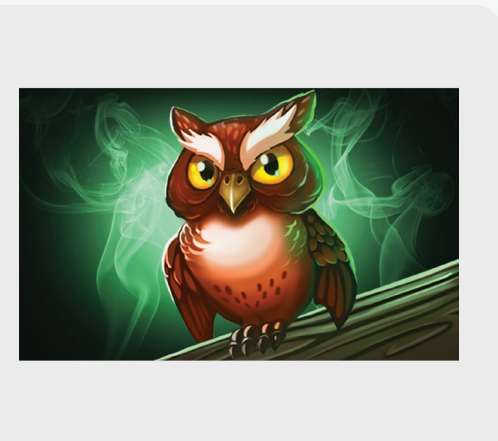
**MID PAY 1**  
LADY



**MID PAY 2**  
BAT



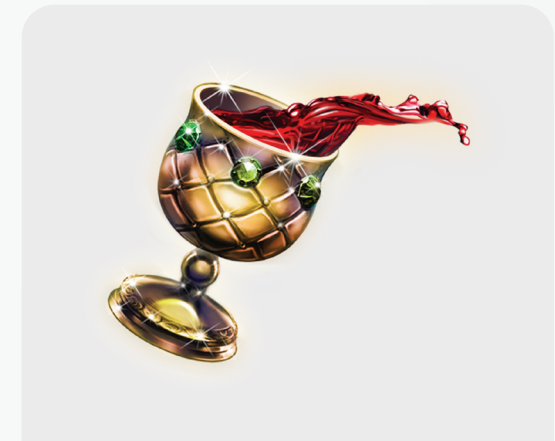
**MID PAY 3**  
CAT



**MID PAY 4**  
OWL



**MID PAY 5**  
CANDLESTICK



**MID PAY 6**  
MUG



**LOW PAY 1**  
NINE



**LOW PAY 2**  
TEN



**LOW PAY 3**  
JACK



**LOW PAY 4**  
QUEEN



**LOW PAY 5**  
KING



**LOW PAY 6**  
ACE











# Enchanted Manor<sup>®</sup>

## Paytable

Winnings per symbol are calculated for Bet amount of €0.80.

IS WILD

	x5 €40.00 x4 €4.00 x3 €1.00		x5 €10.00 x4 €2.00 x3 €0.50		x5 €4.00 x4 €1.50 x3 €0.20
	x5 €2.00 x4 €1.00 x3 €0.20		x5 €2.00 x4 €1.00 x3 €0.20		x5 €1.00 x4 €0.50 x3 €0.20
	x5 €1.00 x4 €0.50 x3 €0.20	<b>K</b>	x5 €0.50 x4 €0.20 x3 €0.10	<b>Q</b>	x5 €0.50 x4 €0.20 x3 €0.10
<b>J</b>	x5 €0.50 x4 €0.20 x3 €0.10	<b>10</b>	x5 €0.50 x4 €0.20 x3 €0.10	<b>9</b>	x5 €0.50 x4 €0.20 x3 €0.10
<u>STACKS</u>					
			5 €1.60 4 €1.60 3 €1.60 2 €1.60		



# Enchanted Manor<sup>®</sup>

---

## Payout rules

- Line wins contain one symbol from each adjacent reel, beginning with the leftmost reel.
- Only the highest win is paid per winning combination on the same pay line.
- When winning on multiple pay lines, all wins are added to the total win.
- Free spins and Bonus wins are added to the payline win.

# Enchanted Manor<sup>®</sup>

## User interface (UI)

	MENU BUTTON	Opens Main menu
	SOUND BUTTON	Turn sound on and off
	INFO BUTTON	Opens Game rules
<b>CREDITS</b> €500.00	CREDIT DISPLAY	Displays the credit amount
<b>BET</b> ▼ €0.50 ▲	BET +/- BUTTON	Increases and decreases the bet amount
<b>BET</b> €0.50	BET DISPLAY	Displays the bet amount
<b>WIN</b> €100.00	WIN INFO DISPLAY	Displays win amount
	TURBO MODE	Enable/disable fast play

	SPIN BUTTON	Displays number of rounds to be played during autoplay
	AUTOPLAY BUTTON	Opens Autoplay controls
10 25 50	NUMBER OF ROUNDS	Displays number of rounds to be played during autoplay
	HISTORY	Displays history
	CLOSE GAME	Closes the game
	SOUND	Turn sound effects on and off
	MUSIC	Turn background music on and off
	TURBO MODE	Enable/disable fast play

# Enchanted Manor<sup>®</sup>

## Additional information

### Random number generator (RNG)

Random Number Generator in use is standard Java SecureRandom, which produces cryptographically pseudo random number generator (CSPRNG).

The Random Number Generator in use has been tested and approved towards jurisdiction specific requirements by accredited testing laboratory.

Version	Description	Date	Author
1.0	Initial document	04.10.2022	Sašo Kokol