

**HACKSAW**  
**G A M I N G**

**HAND OF**  
**ANUBIS**

**Hand of Anubis**

**Game IDs: 1164/1165/1166/1167**

## GAME DESCRIPTION

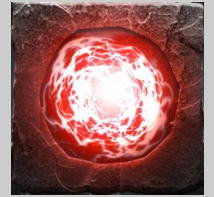
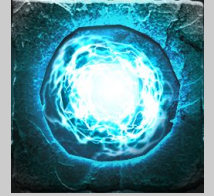
Welcome to the Afterlife! Hand of Anubis is a game with a 5x6 grid and cascading cluster wins. This Egypt-themed slot has a potential max win of 10,000 times your bet and several different exciting mechanics in both the base game and the two bonus games!



## FEATURES

### SOUL ORBS

The base game contains two different Soul Orb symbols; one red and one blue. On each new round, there is a chance of landing either one or both Soul Orbs, or neither. Both Soul Orbs are Wild symbols with stacking multipliers that absorb power from all cluster wins in a round. The multiplier on the red Soul Orb increases by 1x for each symbol in every cluster win, while the multiplier on the blue Soul Orb increases by 1x per winning cluster. The multipliers are applied to any win the Soul Orbs are a part of. The multiplier resets on every new round. If both Soul Orbs connect to a winning cluster the multipliers on the Soul Orbs multiply each other and then the win.



### BONUS FEATURES

This game contains two bonus features triggered by landing Free Spins symbols in the base game.

Landing 3 Free Spins symbols activates the Underworld bonus game.

Landing 4 Free Spins symbols activates the Judgment bonus game.



#### Underworld

*Bonus game with 10 free spins*

In this bonus feature all paying symbols from the base game reappear together with a special green Soul Orb and a multiplier modifier symbol.

This feature has multipliers below each reel. Multipliers are increased when winning clusters form, increasing by 1x for each winning symbol on the corresponding reels. The multipliers can also be multiplied by the Anubis Skull multiplier modifier symbol. The possible values for the multiplier modifiers are: x2, x3, x4, x5 and x10.



When the green Soul Orb symbol lands on a reel, the multiplier for that reel is activated. All activated multipliers are global. The value of all activated multipliers are added together and multiply the value of each winning cluster. Each time a multiplier is activated 3 additional spins are awarded. The max value per multiplier is 9999x.



*Judgment bonus game detailed on next page...*

## FEATURES continued

### Judgment

Bonus game with 3 refilling free spins

In this bonus feature the symbols from the base game are replaced by special "block" symbols. This feature has multipliers above each reel. Multipliers are increased by landing Multiplier Modifier Blocks, which can be either adding or multiplying. There are Normal and Epic variants of both blocks, which affect either only the multiplier in the reel where they land, or all multipliers.



Adding modifiers values can be

Skull: 1x, 2x, 3x, 4x, 5x, 10x, 25x, 50x and 100x

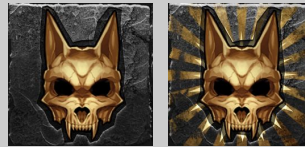
Epic Skull: 1x, 2x, 3x, 4x, 5x, 10x, 25x, 50x and 100x



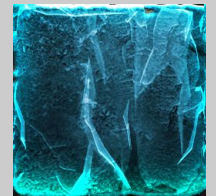
Multiplying modifiers values can be

Anubis Skull: x2, x3, x4, x5 and x10

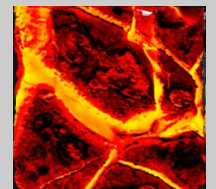
Epic Anubis Skull: x2, x3, x4, x5 and x10



When an ice block drops onto the grid, it will be crushed and a Multiplier Block will drop from the multiplier above the reel and fill the empty space. The value on each Multiplier Block is equal to the value of the reel multiplier where they drop. Multiplier Blocks fall to the bottom of the grid at the end of each drop, where they stick and stack on top of each other to gradually fill up the grid.



There is also a special Crusher Block that falls through all other blocks to the bottom of the grid and destroys all Multiplier Blocks in its path to make room for new blocks to drop in. When the Crusher Block reaches the bottom of the grid, it transforms into a Multiplier Block with a value equal to the sum of all Multiplier Blocks that were destroyed by the Crusher Block.



Every time a Multiplier Block, Multiplier Modifier Block or Crusher Block lands, the remaining spins reset to 3. When the bonus feature ends, the payout will equal the sum of all Multiplier Blocks times the bet level. 3 spins in a row without a Multiplier Block, Multiplier Modifier Block or Crusher Block ends the feature.

### SPECIAL SYMBOLS

The blue and red Soul Orb symbols only appear in the base game, and act as Wild symbols that substitute for any Low or High paying symbol.

The green Soul Orb symbol only appears in the Underworld bonus game.

The Free Spin symbol only appears in the base game.



**GAME DATA**Game name: **Hand of Anubis**Volatility: **5 of 5**Max feature win: **€1,000,000 (10,000x)** or equivalent for other currencies (based on a €100 bet)How to win: **Cluster**Bet levels: **€0.1, €0.2, €0.4, €0.6, €0.8, €1, €1.2, €1.4, €1.6, €1.8, €2, €3, €4, €5, €6, €7, €8, €9, €10, €15, €20, €25, €30, €40, €50, €75, €100**Progressive jackpot game: **No**

Game ID	RTP	Hit freq	Underworld bonus buy RTP	Judgment bonus buy RTP
1164	96.24%	36.92%	96.29%	96.18%
1165	94.32%	36.92%	94.40%	94.42%
1166	92.28%	36.91%	92.23%	92.24%
1167	88.41%	36.89%	-	-

**Recommended size and ratio for desktop browsers**

1366 x 768

16:9

**Technology and compatibility**

WebGL support:

IE 11, Edge 12, Firefox 24, Chrome 33, Safari 8, iOS Browsers 8, Chrome Android 64, UC Android 11.8, Samsung Internet 4

Web Audio API support: Edge 12, Firefox 25, Chrome 10, Safari 6, iOS Browsers 6, Chrome Android 64, UC Android 11.8, Samsung Internet 4

**Language and currency support**

Our games support over 20 languages and 80 currencies. Please ask your Account Manager for the latest document with all details.



Mobile view



Tablet view



Desktop view



**Thank you!**

**For more information, please contact us.  
[info@hacksawgaming.com](mailto:info@hacksawgaming.com)**

