



**GAME OVERVIEW**

# CASH™

# BONANZA

WIN  
MULTIPLIER  
**3X**

BUY  
FREE  
SPINS  
**100.00**

WILD

7

CASH™  
BONANZA



**Game description**

Cash Bonanza™ brings you inside a golden vault full of coins and dollar bills. This 4×6 slot contains a timeless design featuring fruity symbols and Wild's to keep the prizes...well, surprising!



## GAME OVERVIEW: CASH BONANZA™



**Theme:**

Cash Bonanza

**Player Demographic:**

All

**Player Skill Level:**

All

**Reels:**

6

**Symbols:**

13

**Paylines:**

ways to win



**Progressive:**

No

**Wild Symbol:**

NO

**Bonus Game:**

Yes

**Game ID:**

vswaysbankbonz

**Default RTP:**

96.52%

**Bet Multiplier**

20



## GAME OVERVIEW: CASH BONANZA™

### Increasing respin feature

- The winning spin triggers the respin.
- The winning symbols and each symbol the same as any winning symbol lock on the screen
- In case of a winning spin WILD and SCATTER symbols are held over as part of winning symbol, even if they are not part of a win
- Each reel is increased on the number of the locked symbols on this reel. Max height of the reel is 8.
- The respins process is repeated until the new types of symbols added to the win.

Example: The symbol P1 triggers the respin. More P1 symbols won't retrigger the respin, but the win with symbol P2 will retrigger one more respin.

- 3 or more Scatter (2 or more in free spins ) also trigger respins for a chance of more wins/scatters
- Wins are evaluated and paid in last respin.
- The screen size is reset to 4x6 after the last re-spin



### Free Game

- Landing 3 or more [SCATTER] will trigger the Free spins feature in the last respin.
- 3 SCATTER awarding 8 Free spins with 4 additional free spins for each additional scatter in view.
- 2 SCATTER will re-trigger the Free spins awarding an extra 4 spins with 4 additional spins for each additional scatter in view.
- The size of the screen doesn't reset during the free game and grows constantly. The win symbols on the last respin also increase the size of the screen for next free spin.
- The free game uses total win multiplier. Each respin the multiplier count is increased by +1. In the final respin the total win is multiplied with this multiplier. The multiplier is reset after the last respin.

### Win limit

- Game has max win limit for one round – 5000 x TB.



# CASH™ BONANZA

**WAYS**  
**4096**



**CREDIT** \$100,000.00  
**BET** \$2.00

**HOLD SPACE FOR TURBO SPIN**



**AUTOPLAY**





**WAYS**  
**4096**



**BET MULTIPLIER 20x**

**BET**



**10**



**COIN VALUE**



**\$0.50**



**TOTAL BET**



**\$100.00**



**AUTOPLAY**



**CREDIT \$100,000.00**

**BET \$100.00**

**HOLD SPACE FOR TURBO SPIN**





# GAME RULES



All symbols pay from left to right on adjacent reels starting from the leftmost reel.

	6 - \$1,000.00
	5 - \$500.00
	4 - \$250.00
	3 - \$100.00

	6 - \$250.00
	5 - \$100.00
	4 - \$50.00
	3 - \$30.00

	6 - \$250.00
	5 - \$100.00
	4 - \$50.00
	3 - \$30.00

	6 - \$200.00
	5 - \$80.00
	4 - \$40.00
	3 - \$30.00

	6 - \$100.00
	5 - \$60.00
	4 - \$30.00
	3 - \$20.00

	6 - \$50.00
	5 - \$30.00
	4 - \$20.00
	3 - \$10.00

	6 - \$50.00
	5 - \$30.00
	4 - \$20.00
	3 - \$10.00

	6 - \$40.00
	5 - \$20.00
	4 - \$10.00
	3 - \$5.00

	6 - \$40.00
	5 - \$20.00
	4 - \$10.00
	3 - \$5.00

	6 - \$40.00
	5 - \$20.00
	4 - \$10.00
	3 - \$5.00

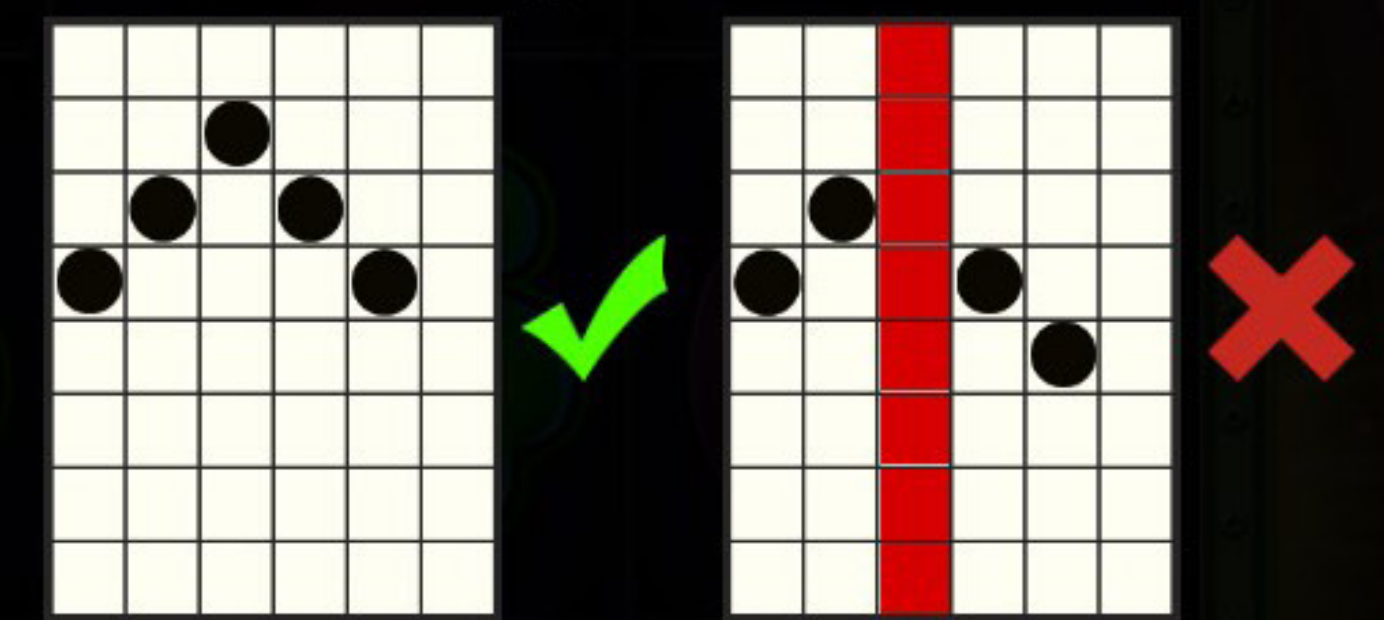


This symbol is WILD and substitutes for all symbols except for SCATTER. WILD symbol appears on reels 2, 3, 4, 5 and 6. WILD symbol is locked in place for every respin.



This is the SCATTER symbol. It appears on all reels. 3 or more SCATTER symbols trigger the FREE SPINS feature. SCATTER symbol is locked in place for every respin.

## Ways to win



Wins awarded for left to right adjacent symbol combinations of any size. The maximum number of possible ways to win is 262144.



CREDIT \$100,000.00  
BET \$100.00

### HOLD SPACE FOR TURBO SPIN



AUTOPLAY



## INCREASING WAYS RESPIN FEATURE

The base game screen has a format of 6 reels by 4 symbols. The number of symbols on each reel can increase up to a maximum of 8, giving a maximum number of ways to win 262144.

At every spin, the symbols that form winning combinations and all symbols of the same type, along with WILD and SCATTER, are locked in place and a respin is triggered. The number of possible symbols present on reels that contain locked symbols are increased by the number of newly locked symbols. If more symbols as the ones locked hit as part of the respin or new combinations are formed, those are also locked in place, a new respin is triggered and the number of possible symbols is increased again.

Respins end when no more symbols are locked in place.

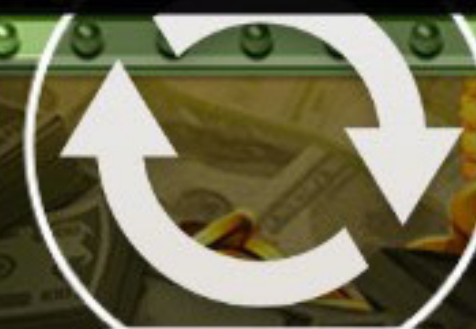
After all respins end, the game pays the total amount of all winning combinations on the screen.

If at the end of the respin 3 or more SCATTER symbols are on the screen, the FREE SPINS round is awarded. The number of symbols on each reel resets after every spin.



**CREDIT** \$100,000.00  
**BET** \$100.00

**HOLD SPACE FOR TURBO SPIN**



AUTOPLAY





## FREE SPINS RULES

The round starts with 8 free spins plus an additional 4 free spins for each SCATTER more than 3 when the feature was triggered.

The round starts from the number of symbols on each reel that was achieved by the spin that triggered the feature. The INCREASING WAYS RESPIN is also present in the FREE SPINS and the number of symbols on each reel is retained at every free spin until the end of the round.

During the round, at every respin, a win multiplier is increased by 1x. At the end of the respin, the total win is multiplied by the multiplier achieved.

Hit 2 or more SCATTER symbols during the round to get 4 additional free spins plus another 4 for each SCATTER more than two.

Special reels are in play during the free spins round.

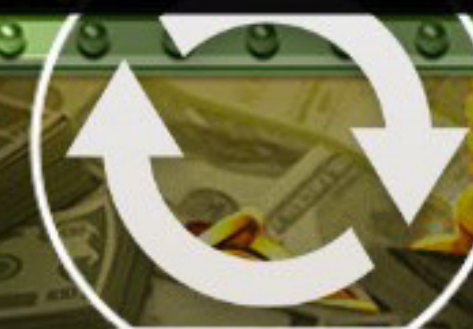
## MAX WIN

The maximum win amount is limited to 5,000x bet in both base game and free spins. If the total win of a FREE SPINS ROUND reaches 5,000x bet the round immediately ends, win is awarded and all remaining free spins are forfeited



CREDIT \$100,000.00  
BET \$100.00

HOLD SPACE FOR TURBO SPIN



AUTOPLAY



WAY  
409



## GAME RULES

VOLATILITY 

High volatility games pay out less often on average but the chance to hit big wins in a short time span is higher.

Only the highest win is paid per winning combination on the same pay way.

When winning on multiple pay ways, all wins are added to the total win.

All wins are multiplied by base bet.

All values are expressed as actual wins in coins.

Free Spins round win is awarded to the player after the round completes.  
Free Spins round total win in the history contains the whole win of the cycle.

SPACE and ENTER buttons on the keyboard can be used to start and stop the spin.

The theoretical RTP of this game is 96.52%

MINIMUM BET: \$0.25

MAXIMUM BET: \$175.00

Malfunction voids all pays and plays.

Page 4/7



**CREDIT** \$100,000.00  
**BET** \$100.00

**HOLD SPACE FOR TURBO SPIN**

AUTOPLAY



## HOW TO PLAY

Click the or buttons to change the bet value and open the bet menu.  
Select the bet you want to use in the game.

## MAIN GAME INTERFACE

opens the SETTINGS menu that contains settings which affect the way the game is being played.

opens the Information page

CREDIT and BET labels show the current balance and current total bet.  
Click on the labels to switch between coins view and cash view.

and change up or down the current bet and open the bet menu, where you can change the bet denominations.

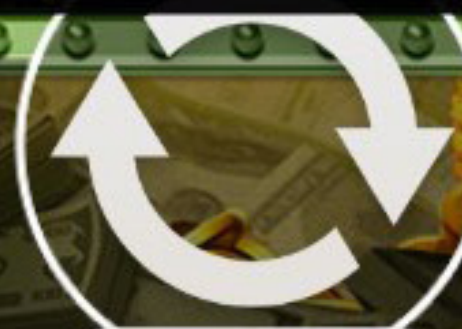
starts the game

opens the automatic play menu



CREDIT \$100,000.00  
BET \$100.00

**HOLD SPACE FOR TURBO SPIN**



AUTOPLAY





## SETTINGS MENU

**QUICK SPIN** – Selects the Quick Spin setting for game reels to start automatically and stop as soon as released

**INTRO SCREEN** – toggles the introductory screen on and off


**AMBIENT** – toggles the ambient sound and music in the game on and off

**SOUND FX** – toggles the game's sound effects on and off

**GAME HISTORY** – opens the game history page


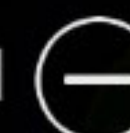
## INFORMATION SCREEN

 and  scroll between information pages

 closes the information screen

## BET MENU

The bet menu shows the number of lines available in the game, and the current total bet in both coins and cash.

Use the  and  buttons in the COINS PER LINE and COIN VALUE fields to change the values.



The maximum win amount is limited to 5000X bet. If the total win of a round reaches 5000X bet the round immediately ends, win is awarded up to the cap and all remaining features are forfeited.

Page 6/7



**CREDIT** \$100,000.00  
**BET** \$100.00

**HOLD SPACE FOR TURBO SPIN**



AUTOPLAY





# AUTOPLAY

Click on the buttons showing the number of possible auto-spins to start Autoplay

SKIP SCREENS option auto-skips the feature introduction and end screens after a short period of time

WAYS  
4096



CREDIT \$100,000.00  
BET \$100.00

HOLD SPACE FOR TURBO SPIN



AUTOPLAY





# CASH™ BONANZA

**WAYS**  
**4096**

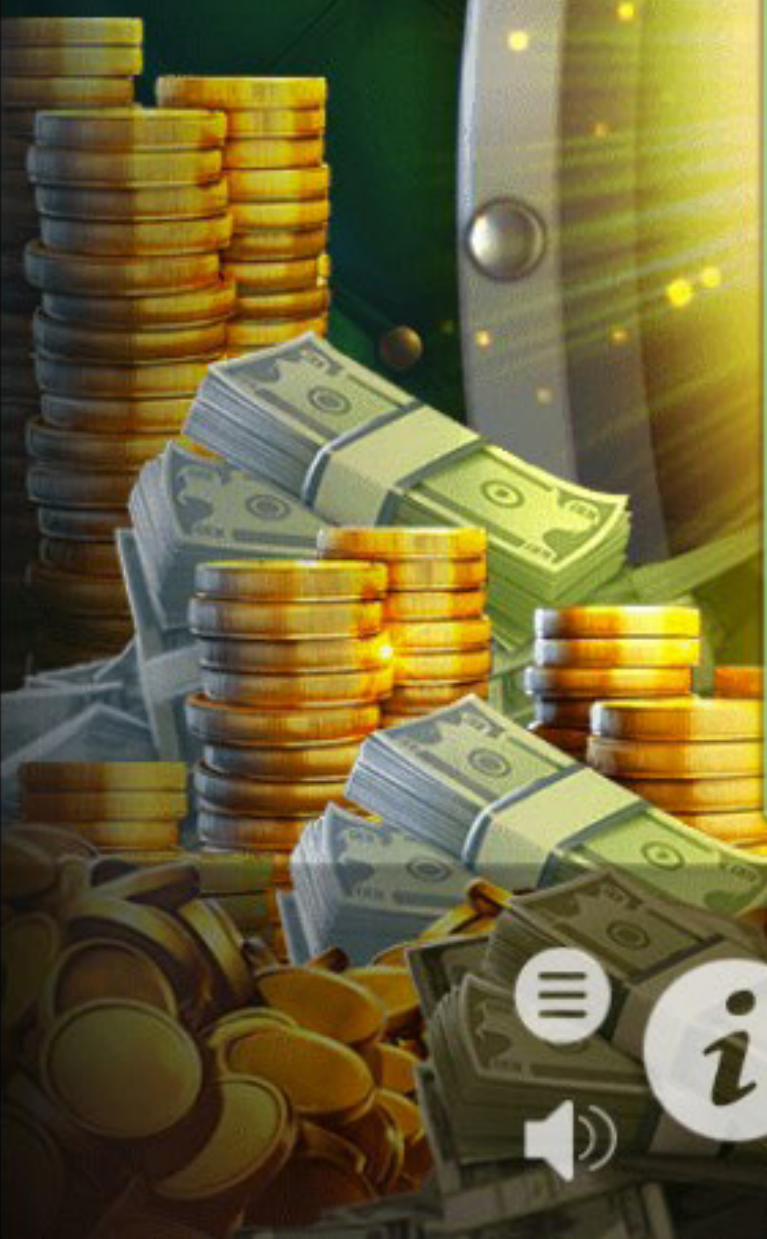


**SPIN TO WIN!**

**CREDIT \$99,900.00**  
**BET \$100.00**



AUTOPLAY





# CASH™ BONANZA

**WAYS**  
**15625**



**CREDIT \$99,900.00**  
**BET \$100.00**



**AUTOPLAY**



# CONGRATULATIONS!

## YOU HAVE WON

# 20

## FREE SPINS

PRESS ANYWHERE TO CONTINUE

WAYS  
15625

FREE  
SPINS  
20

CREDIT \$99,900.00  
BET \$100.00

FREE SPINS LEFT 20

AUTOPLAY





WIN  
MULTIPLIER  
**3x**

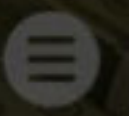
WAYS  
**262144**

FREE  
SPINS  
**12**

# NICE

# WIN

# \$1,980.00



BET **1.00**



AUTOPLAY



SH™  
WINZA

# CONGRATULATIONS!

## YOU HAVE WON

# \$12,390.00

## IN 20 FREE SPINS

PRESS ANYWHERE TO CONTINUE

WAYS  
262144

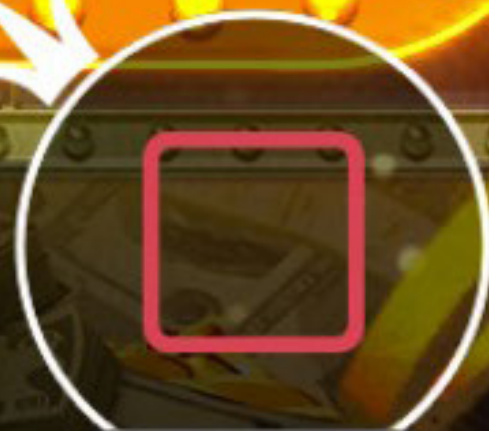
LAST  
FREE SPIN

CASH™  
MANZA



CREDIT \$112,290.00  
BET \$100.00

# WIN \$12,390.00



AUTOPLAY





**THANK YOU!**

Contact us for more info: [sales@pragmaticplay.com](mailto:sales@pragmaticplay.com)

