



**STOCK
MARKET**
Live

 **Evolution**



GAME OVERVIEW

HOW TO PLAY

VARIANTS

PAYOUTS

MARKETING ASSETS



IMMERSE INTO THE WORLD OF STOCK TRADING

Stock Market from Evolution offers exciting, fast-paced engagement as you aim to predict the stock value movement in the game's virtual financial markets.

Now you can 'play' the markets, profiting from the Ups and Downs if you predict correctly. Follow the action on a stock trading screen where charts dynamically track and visualise stock value movements in real-time.

Highly experienced investment and cryptocurrency traders know that fortunes can potentially be made in the blink of an eye – and now you can experience a similar thrill.

Try to predict whether a Trading Session (game round) will end above or below the starting stock value. Move quickly, though, as each Trading Session starts automatically once betting time ends, and your Portfolio is automatically re-wagered unless you act.

As the excitement mounts, use your accumulated experience and gut instinct to assess the right moment to Cash Out and trading profits can be yours!



KEY BENEFITS

- ▶ Short, fast-paced game rounds replicate the excitement of stock trading in real-time
- ▶ Auto re-wager of player's Portfolio builds momentum and engagement
- ▶ Partial loss of a bet in case of an incorrect prediction.

RETURN TO PLAYER (OPTIMAL)

99%



GAME OVERVIEW

HOW TO PLAY

VARIANTS

PAYOUTS

MARKETING ASSETS



HOW TO PLAY

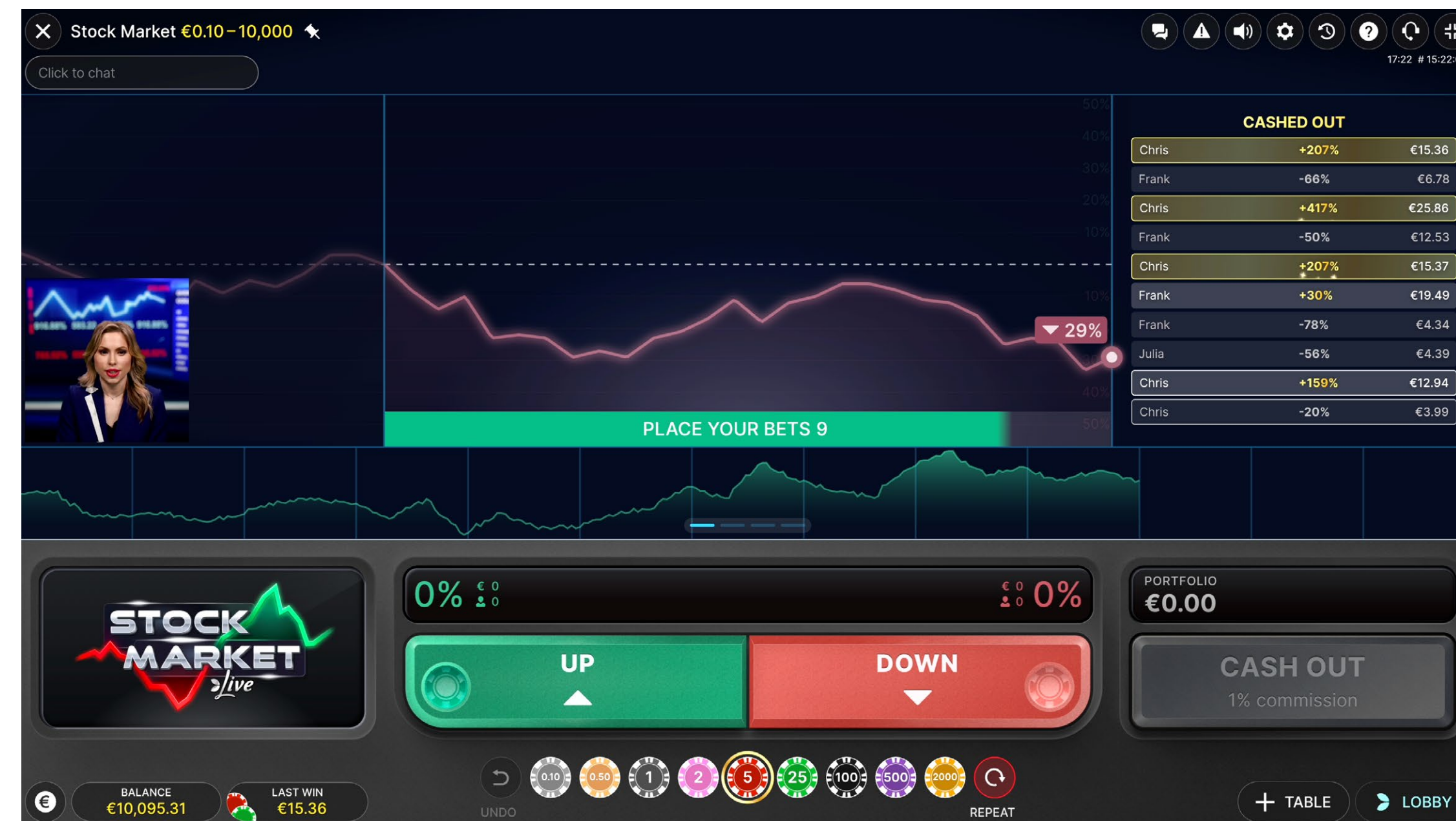
Playing the role of a stock market trader, try to predict whether a Trading Session will end above or below the starting stock value. Your ultimate aim is to increase your Portfolio value through a streak of successful predictions, then Cash Out at the optimum time.

PLACE YOUR INITIAL BET

The game features two phases – the betting phase and the Trading Session.

Place your bet on either 'Up' or 'Down', based on whether you think the stock value will rise or fall. Once your bet is accepted, it's added to your Portfolio.

The Trading Session begins immediately after the betting phase is over, and the value change of the stock is visualised as a dynamic chart that rises and drops within the Up and Down areas.





GAME OVERVIEW

HOW TO PLAY

VARIANTS

PAYOUTS

MARKETING ASSETS



TRADING SESSION

As the Trading Session commences, the stock value chart starts to generate.

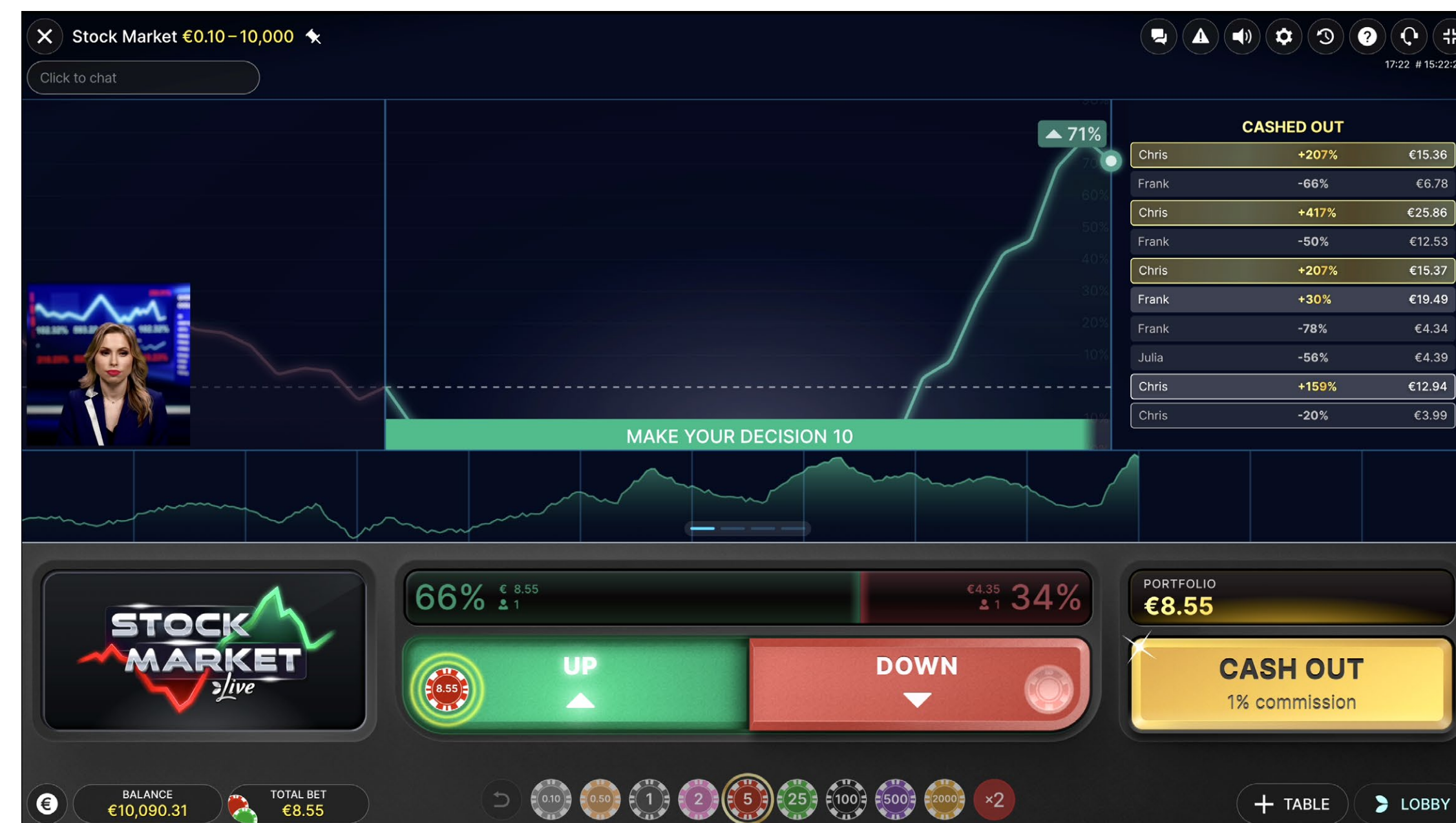
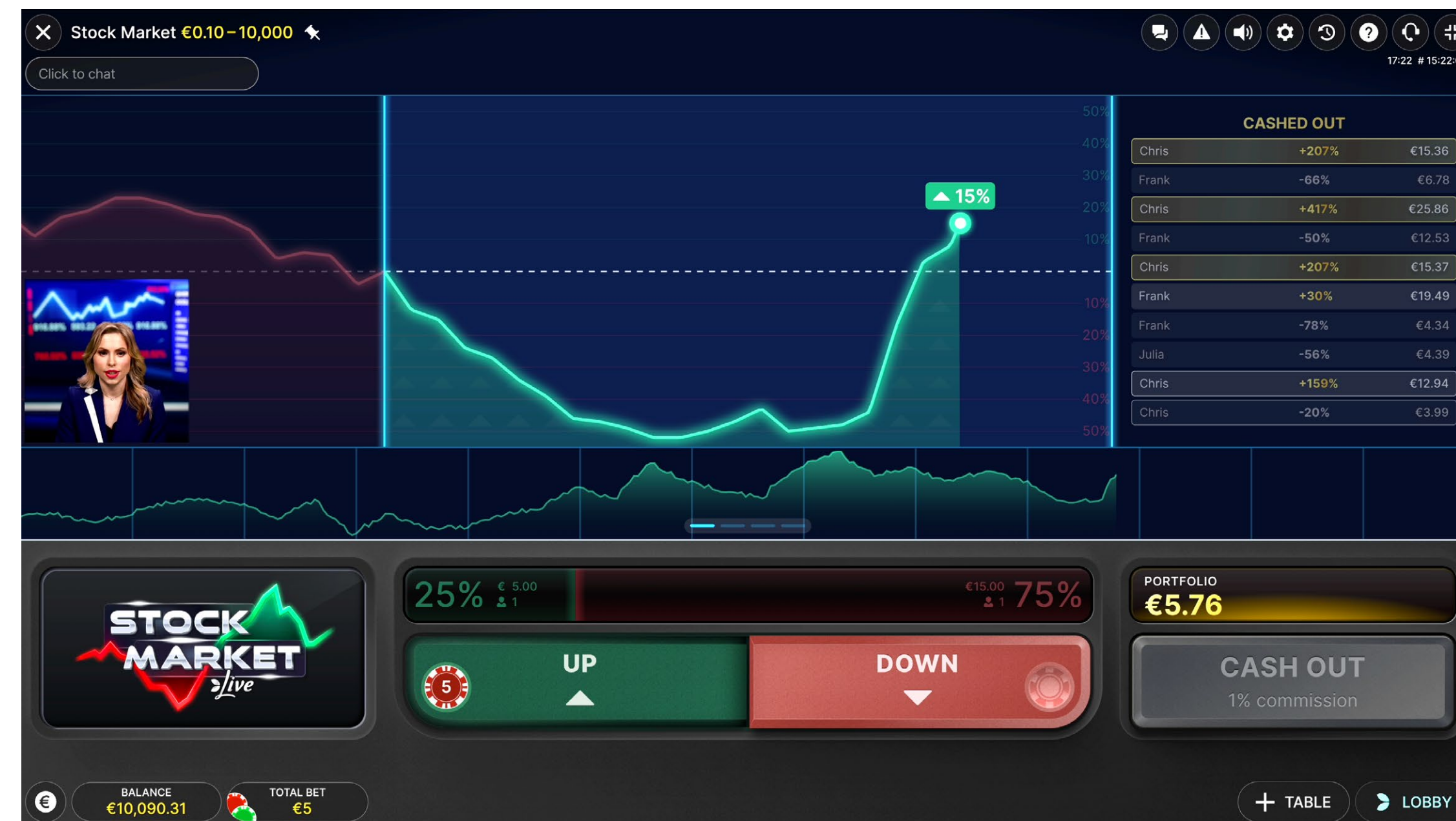
The chart will go through several interim values that will also be reflected in your Portfolio, but this does not affect the result of the session. All chart values are measured in percentages and simulated using RNG (Random Number Generator).

The outcome of the game is determined by the stock value at the point when the chart line touches the right boundary of the chart. The value can fluctuate between -100% and +100%; however, it will never land on 0%. The resulting stock value either increases or decreases the size of your Portfolio, which is always rounded up or down to the nearest smallest unit of currency.

HOW PLAYER WINS OR LOSSES ARE CALCULATED

Your win or loss is equal to the stock's percentage change

- If you bet on 'Up' and the stock value goes up by 50%, your win is 50% of your bet.
- If you bet on 'Up' and the stock value goes down by 50%, your Portfolio loses that amount.
- If you bet on 'Down' and the stock value goes down by 50%, your win is 50% of your bet.
- If you bet on 'Down' and the stock value goes up by 50%, your Portfolio loses that amount.





GAME OVERVIEW

HOW TO PLAY

VARIANTS

PAYOUTS

MARKETING ASSETS



BETTING PHASE BEFORE THE NEXT TRADING SESSION

Regardless of whether your previous session resulted in a win or loss, any remaining balance in your Portfolio is automatically re-wagered on the same bet spot for the next session.

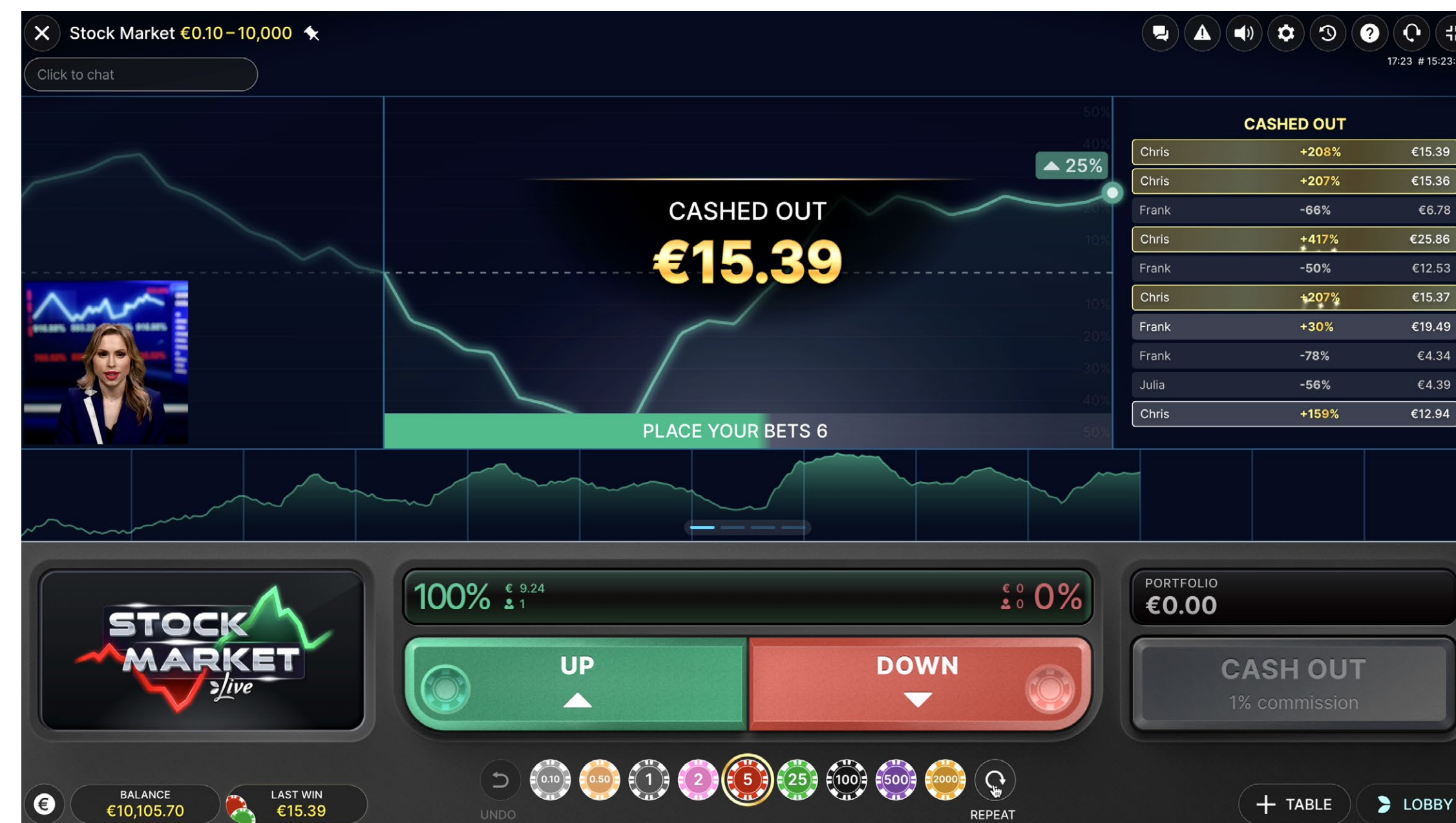
During the betting phase, you can now:

- Keep your bet on the same bet spot
- Switch your bet to the opposite bet spot
- Top-up the bet by adding more chips to it
- Cash Out your Portfolio.

To switch your bet to the opposite bet spot, click/tap on it once. If you click/tap on your newly selected bet spot another time, you will add more chips to it.

CASH OUT OPTION

If you want to stop playing, you need to Cash Out. Your Portfolio value will then be added to your in-game balance. The Cash Out button can only be used during the betting phase, and each Cash Out is subject to a 1% commission fee.





GAME OVERVIEW

HOW TO PLAY

VARIANTS

PAYOUTS

MARKETING ASSETS



VARIANTS

Stock Market is available in four different variants, depending on the player's jurisdiction.

VARIANT 1

Stock Market with a live video stream featuring a game host and automatic re-wagering of the bet on the same bet spot. The game continues until the player Cashes Out their portfolio.

VARIANT 2

Stock Market with a live video stream featuring a game host, but without automatically re-wagering the bet on the same bet spot. The game automatically Cashes Out the players portfolio after each game round.

VARIANT 3

Stock Market without a live video stream with the game host and with automatic re-wager. The game automatically Cashes Out the players portfolio after each game round.

VARIANT 4

Stock Market without a live video stream with the game host and automatic re-wager of the bet on the same bet spot. The game continues until the player Cashes Out their portfolio.

All Cash Outs are subject to 1% Commission fee.





GAME OVERVIEW

HOW TO PLAY

VARIANTS

PAYOUTS

MARKETING ASSETS



CONTACT YOUR KEY ACCOUNT MANAGER FOR MORE INFORMATION

PAYOUTS

PAYOUT

Every 1% of stock value change in the correctly guessed direction grants the player a 1% payout on their bet. Vice versa, every 1% of stock value change in the incorrectly guessed direction costs the player 1% of their bet.

Therefore, payouts could be:

BET	PAYOUT
UP	0.01-2 (x bet)
DOWN	0.01-2 (x bet)

THEORETICAL PAYOUT PERCENTAGE (OPTIMAL)

99% (Optimal).



VISUALS ARE FOR ILLUSTRATIVE PURPOSES AND PRODUCTS MAY VARY



GAME OVERVIEW

HOW TO PLAY

VARIANTS

PAYOUTS

MARKETING ASSETS



All of our marketing assets for Stock Market can be downloaded from our client area:

<https://clientarea.evolution.com/games/stock-market>

