

XIBALBA

The twelve demon lords of Xibalba, gods of death, rule the underworld with firm hand. Men are summoned, and they fall, for the roads to Xibalba are filled with deceit and the gods full of treacherous trickery. Only the hero twins can defeat them and unlock the treasures for so long hidden. This is a 5x3 video slot with up to 7776 ways to win, the signature growing falls feature that grows the panel on each cascade and the ways to win, a Gigantor feature that syncs reels making symbols gigantic, growing wilds that grow with each cascade, an unlimited progressive panel multiplier that grows with each cascade with no upper limit, free spins with all features active with an unlimited panel multiplier that does not reset and re-triggers.

ID: 10052



Peter & Sons



Global release

**JANUARY 20,
2022**



RTP

96,10%



HIT Frequency

27,07%



Volatility

HIGH



Default Max win

1.000.000 €



Paylines

7 776



Default bet size

2 €



Default bet range

0,10 € - 50 €



Default coin range

0,01 - 5



Default max multiplier

X 20.000

Key selling points

Big win potential

Growing falls

Growing wilds

Gigantor

Unique Visuals

Target demographic

Oriented towards a western audience

Players looking for Gigablox games

Younger player audience

Game features

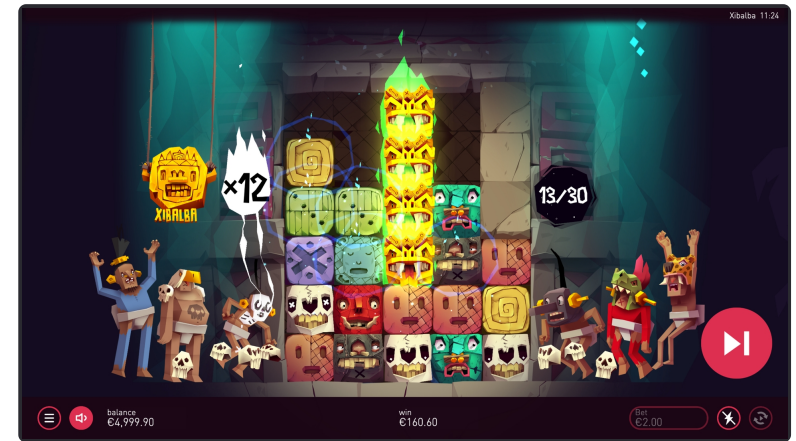
Free Spins

Free spins are triggered when 3 scatter symbols land on the reels. 15 free spins are awarded. Free spins are played with all features i.e. unlimited multiplier during cascades, Growing wilds and Gigantor feature. At start of the free spins game the multiplier is set to x1 and increases on each cascade. * The multiplier does not reset when the cascade is over and does not have an upper limit. * 3 Scatters on the panel re-triggers the free spins game, awarding 15 additional free spins.



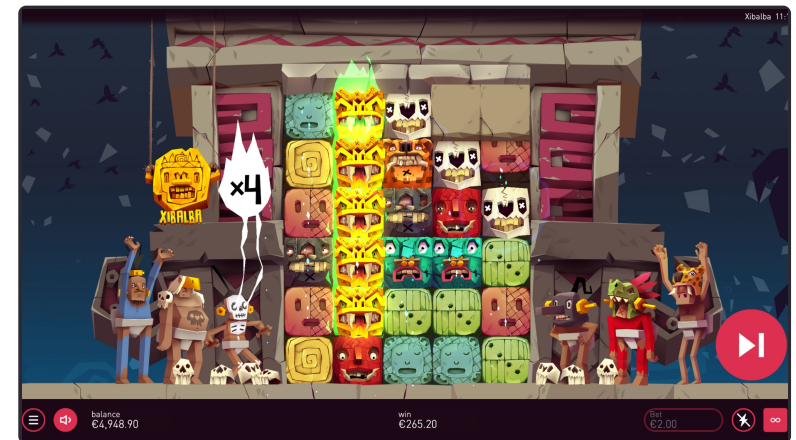
Growing Wilds

These are special wilds that are not removed during cascades when participating in a win. Whenever they appear, all symbols on top of them are replaced by wilds.



Unlimited Multiplayer

A progressive unlimited panel multiplier will increase on each cascade, starting at x1 and with no upper limit. In the base game it resets when the cascade is over. In free spins it does not reset.



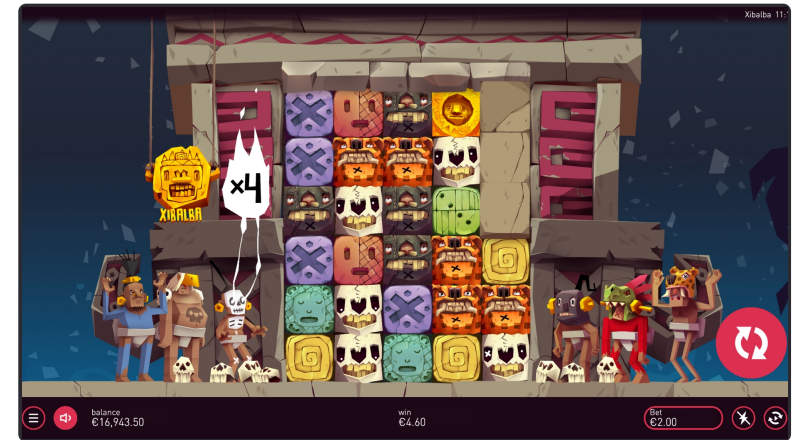
Gigantor

The feature triggers when 2 scatter symbols appear on the reels. Their position define their size. A re-spin is awarded where the reels on which scatters appear move in sync displaying giant symbols of 2x2 up to 3x3 sizes. During re-spins, Cascades will work as usual on win



Growing Falls

When a cascade is initiated, empty slots are filled with new symbols. Additionally, one extra symbol will fall on each reel that participated in the win, Increasing the size of the reels and the number of ways. Reels can grow up to 6 rows.



Game rules

Welcome to Xibalba, a high volatility Video Slot with the signature Growing Falls feature, Cascades with unlimited multiplier, All ways, Re-spins with Gigantor feature, Giant symbols, Wilds, Growing Wilds and a Free Spins bonus game with an unlimited progressive panel multiplier!

About the Game

The twelve demon lords of Xibalba, gods of death, rule the underworld with firm hand. Men are summoned, and they fall, for the roads to Xibalba are filled with deceit and the gods full of treacherous trickery. Only the hero twins can defeat them and unlock the treasures for so long hidden.

Main Game

The main game has a 5×3 panel with All Ways evaluated from left to right and up to 7776 Ways to win. Only the highest winning combination is paid per line. Wins on different paying ways are added. Malfunction voids all pays and plays.

Wins trigger a cascade. Symbols producing a win are removed, symbols on top of them fall down filling the gaps. When empty slots are filled the Growing falls feature increases the size of the reels that are part of the cascade with one additional row. Cascades will continue until there is no further win.

A progressive unlimited panel multiplier will increase on each cascade, starting at x1 and with no upper limit.

* When 2 scatters land on the reels it triggers the Gigantor feature.

* When 3 scatters land on the reels it unlocks the Free spins bonus game, awarding 15 free spins.

* If Re-spin and Free spins are triggered at the same time, re-spins will play first, then free spins will trigger.

Growing Falls

When a cascade is initiated, empty slots are filled with new symbols. Additionally, one extra symbol will fall on each reel that participated in the win, increasing the size of the reels and the number of ways. Reels can grow up to 6 rows.

Gigantor

The feature triggers when 2 scatter symbols appear on the reels. Their position define their size. A re-spin is awarded where the reels on which scatters appear move in sync displaying gigant symbols of 2×2 up to 3×3 sizes.

During re-spins, Cascades will work as usual on wins.

- * Current reel size and multiplier will remain during the feature.
- * If giant symbols appear on uneven reels, the smaller reel will expand to the height of the other synced reel.
- * Growing wilds do not appear during the feature.

Free Spins

Free spins are triggered when 3 scatter symbols land on the reels. 15 free spins are awarded. Free spins are played with all features i.e. unlimited multiplier during cascades, Growing wilds and Gigantor feature.

At start of the free spins game the multiplier is set to x1 and increases on each cascade.

- * The multiplier does not reset when the cascade is over and does not have an upper limit.
- * 3 Scatters on the panel re-triggers the free spins game, awarding 15 additional free spins.

Scatters

Scatters can only appear on reels 2,3 and 4. Scatters are counted after all cascades are over.

* If 2 scatters appear on adjacent reels (reel 2, 3 or reel 3,4) the base spin will continue and the “Synced reels – Giant symbols” feature will trigger.

* If 3 scatters appear, once the base game is completed, free spins bonus game is triggered.

Wilds

Wild appears only on reel2, reel3, reel4 and reel5 ; it may replace all other symbols except the Scatter symbol.

Growing Wilds

These are special wilds that are not removed during cascades when participating in a win. Whenever they appear, all symbols on top of them are replaced by wilds.

How to Calculate Payline Wins

To calculate the total 7776 Ways to Win win, add all the symbol wins together.

To calculate a single symbol win, count the number of consecutive reels that contain the symbol, starting from the left.

If the number of consecutive reels containing the symbol is 3 or greater counting from the left, find the corresponding win amount in the pay table.

If any of the reels contain more than 1 instance of the symbols, the win will be multiplied. Multiply the number of symbols on each of the reels to get the final multiplier. For example: if the first reel contain 2 symbols, the second reel has 3 symbols and the third reel has 2 symbols, the total multiplier is counted as follows: $2*3*2=12$ (total multiplier).

The above doesn't include any Free Spin symbols which pay scattered.

All Way Wins are summed together after the spin.

Calculate the total win in the home currency by multiplying the total coin win with the coin value.

Payout

High symbols



5 - 10 €
4 - 1 €
3 - 0,50 €



5 - 2 €
4 - 0,80 €
3 - 0,40 €



5 - 1,50 €
4 - 0,60 €
3 - 0,30 €



5 - 1 €
4 - 0,50 €
3 - 0,20 €

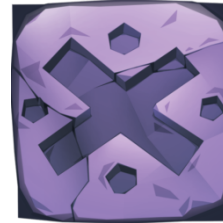


5 - 1 €
4 - 0,50 €
3 - 0,20 €

Low symbols



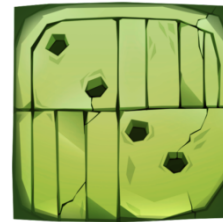
5 - 0,60 €
4 - 0,30 €
3 - 0,20 €



5 - 2,60 €
4 - 0,30 €
3 - 0,20 €



5 - 0,40 €
4 - 0,20 €
3 - 0,10 €



5 - 0,40 €
4 - 0,20 €
3 - 0,10 €



5 - 0,40 €
4 - 0,20 €
3 - 0,10 €

Game menus

Game Panel

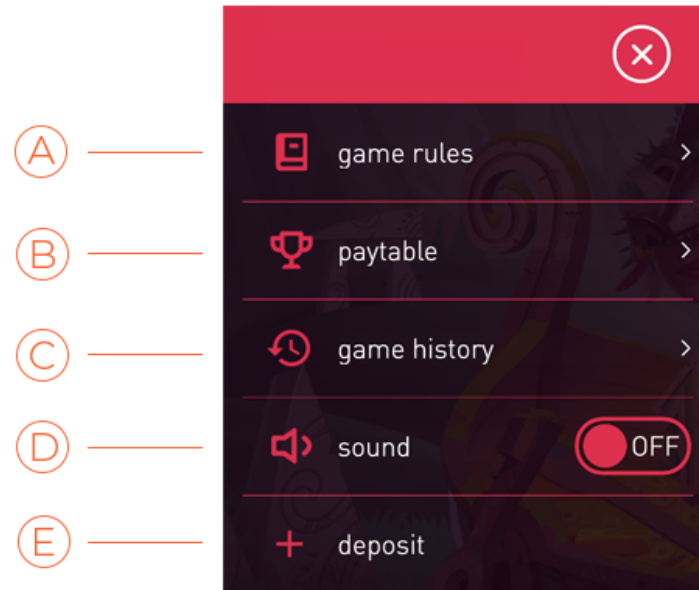


Expand this image

- A - Menu** - Opens the Menu and access Paytable, Gamerules and History are available from the menu.
- B - Sound** - Enable/Disable sounds and music.

- C - Balance** - Displays the player's account balance.
- D - Win** - Displays the win for the current or last win payout step.
- E - Bet** - Displays the current bet.
- F - Fast Play** - Enable/Disable fast play mode.
- G - Autospin** - Opens up the autoplay options.
- H - Spin** - Places the bet and spins the reels. When the reels are spinning, the spin button transforms into the Stop Button.
Pressing the Stop Button stops the reels immediately.

Options Panel



Expand this image

- A - Game Rules** - Opens rules
- B - Paytable** - Opens the paytable
- C - Game History** - Opens the game history
- D - Sound** - Sound on/off
- E - Deposit** - Opens deposit url

